



# Chapter 2

---

## ***Drawing Sketches for Solid Models***

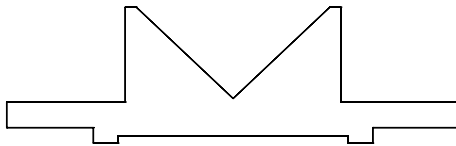
### **Learning Objectives**

**After completing this chapter, you will be able to:**

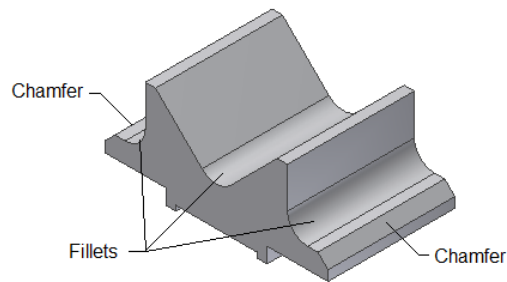
- *Start a new template file to draw sketches.*
- *Set up the sketching environment.*
- *Use various drawing display tools.*
- *Understand the sketcher environment in the Part module.*
- *Get acquainted with sketcher entities.*
- *Specify the position of entities by using dynamic input.*
- *Draw sketches by using various sketcher entities.*
- *Delete sketched entities.*

## THE SKETCHING ENVIRONMENT

Most of the designs created in Autodesk Inventor consist of sketched and placed features. A sketch is a combination of a number of two-dimensional (2D) entities such as lines, arcs, circles, and so on. The features such as extrude, revolve, and sweep that are created by using 2D sketches are known as sketched features. The features such as fillet, chamfer, thread, and shell that are created without using a sketch are known as placed features. In a design, the base feature or the first feature is always a sketched feature. For example, the sketch shown in Figure 2-1 is used to create the solid model shown in Figure 2-2. In this figure, the fillets and chamfers are the placed features.



**Figure 2-1** The basic sketch for the solid model



**Figure 2-2** A solid model created using the sketched and placed features

Once you have drawn the basic sketch, refer to Figure 2-1, you need to convert it into a solid model using solid modeling tools.

You can create sketches in Sketching environment. This environment of Autodesk Inventor can be invoked at any time in the **Part** module or in the **Assembly** module. Unlike other solid modeling programs, here you just need to invoke the **Start 2D Sketch** tool and specify the plane to draw the sketch; the Sketching environment will be invoked. You can draw a sketch in this environment and then proceed to the part modeling environment for converting the sketch into a solid model. The options in the Sketching environment will be discussed later in this chapter.

## Initial Screen of Autodesk Inventor

When you start Autodesk Inventor, the initial screen is displayed with the **Get Started** tab chosen by default, as shown in Figure 2-3. This screen has various options in different panels of the **Get Started** tab. The **Launch** panel of the initial screen contains options such as **New**, **Open**, and **Projects**. These options will be discussed later. By choosing the **Whats new** tool from the **New Feature** panel of the **Ribbon**, you can view all the enhancements in Autodesk Inventor 2015. The **Recently Used** area of this screen displays the recently used Autodesk Inventor files. You can view as well as open these files. You can watch the introductory videos by choosing the **Overview and Fundamentals** tools

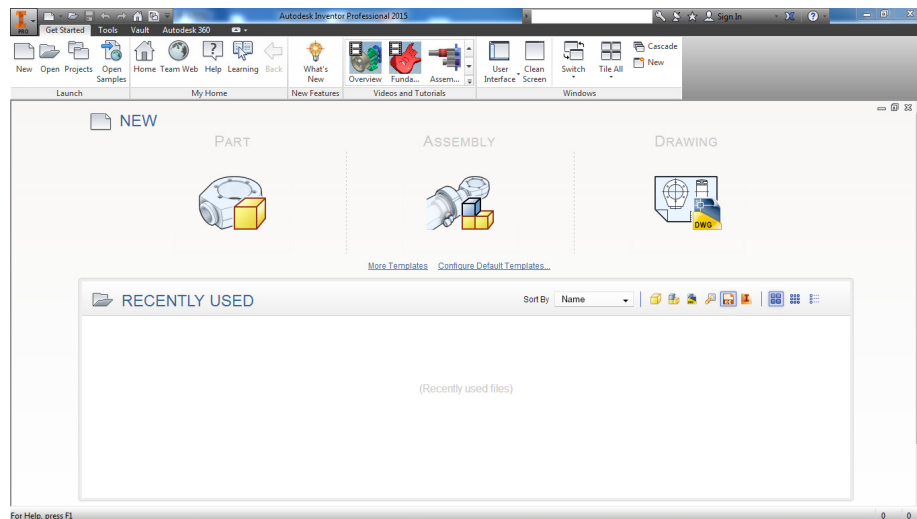


from the **Videos and Tutorials** panel of the **Get Started** tab in the **Ribbon**. On choosing the **Configure Default Template** button from the initial Screen, the **Configure Default Template** dialog box will be invoked, as shown in Figure 2-4. You can choose measurement units and drawing standards from this dialog box. Using the options in the **Autodesk 360** tab of the screen, you can access **Autodesk Exchange** and explore the cloud with **Autodesk 360**.

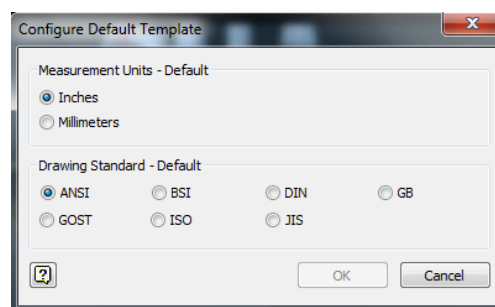


### Note

*If the **Videos and Tutorials** and **Windows** panels are not available by default in the **Get Started** tab of the **Ribbon**, you need to customize the **Ribbon** to add them.*



**Figure 2-3** The initial screen of Autodesk Inventor 2015



**Figure 2-4** The Configure Default Template dialog box

## Starting a New File



In Autodesk Inventor, you can start a new file by choosing the **New** tool from the **Launch** panel in the **Get Started** tab of the initial screen. On doing so, the **Create New File** dialog box will be displayed, refer to Figure 2-5. Alternatively, you can start a new file by choosing the **New** tool from the **Quick Access Toolbar** or by choosing the **Start a new file** button from the **Open** dialog box. You will learn more about the **Open** dialog box later in this chapter.

The options in the **Create New File** dialog box are used to select a template file for starting a design. You can select a template of English, Metric, or Mold Design standard. To start a new metric part file, select the **Metric** option that is available under the **Template** node of the dialog box, as shown in Figure 2-5. The templates that are available on selecting the **Metric** option are discussed next.

### .ipt Templates

Select any *.ipt* template to start a new part file for creating a solid model or a sheet metal component.

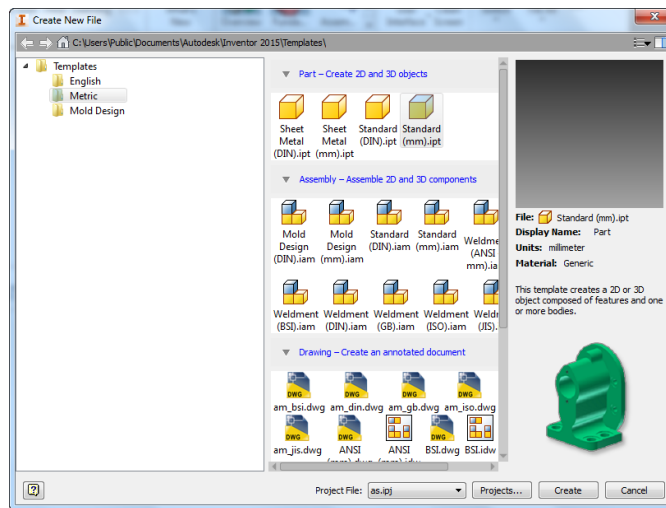


Figure 2-5 The **Create New File** dialog box with the **Metric** node selected

### .iam Templates

Select a *.iam* template to start a new assembly file for assembling various parts. Note that if you select the *Weldment.iam* template, the **Weldment** module of Autodesk Inventor will be started.

### .ipn Templates

Select a *.ipn* template to start a new presentation file for animating the assembly. The **Presentation** module marks the basic difference between the Autodesk Inventor and other design tools. This module allows you to animate the assemblies created in the **Assembly**

module. For example, you can create a presentation in the **Presentation** module that shows a Drill Press Vice assembly in motion.

### .idw Templates

Select a *.idw* template to start a new drawing file for generating the drawing views. You can use the drawing templates of various standards that are provided in this tab, such as ANSI, ISO, DIN, GB, JIS, GOST, and BSI.

### .dwg Templates

Select a *.dwg* template for creating AutoCAD drawing files. You can use the drawing templates of standards such as JIS, ISO, GB, DIN, BSI, and ANSI.

The **Project File** drop-down list in the **Create New File** dialog box displays the active project in which the new file has been started. The **Projects** dialog box can be invoked by choosing the **Projects** button from the **Create New File** dialog box.

## The Open Dialog Box

The **Open** dialog box is used to open an existing file. To invoke this dialog box, choose the **Open** tool from the **Launch** panel of the **Get Started** tab. Figure 2-6 shows the **Open** dialog box.

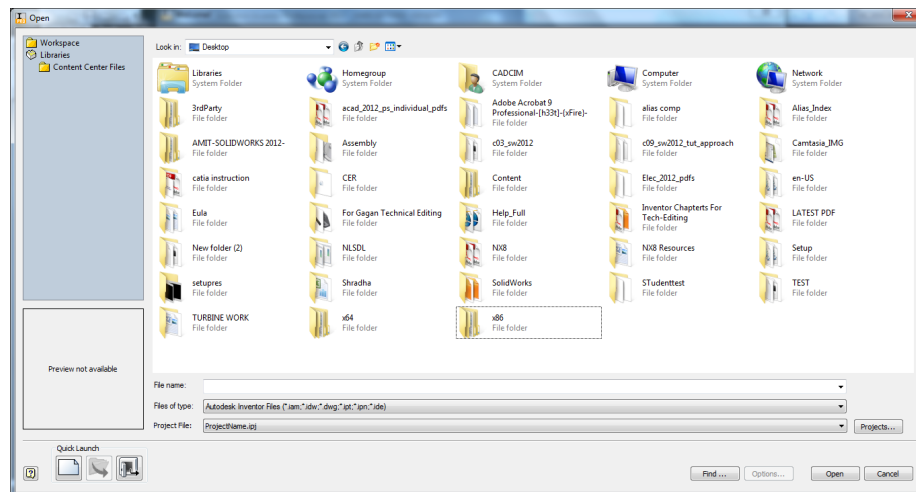


Figure 2-6 The **Open** dialog box

The options in the **Open** dialog box are used to open the existing files. You can browse and select the file that you want to open from the list displayed in the dialog box. The preview of the selected file is displayed in the preview window located at the lower left portion in this dialog box, as shown in Figure 2-7. By default, you can open any file created in Autodesk Inventor. This is because, the **Files of type** drop-down list displays the **Autodesk Inventor Files (\*.iam; \*.idw; \*.dwg; \*.ipt; \*.ipn, and \*.ide)** option. By default, You can also open the files created in other solid modeling programs such as AutoCAD,

Pro/ENGINEER, Alias, Catia V5, SolidWorks, NX, and so on by selecting the respective options from the **Files of type** drop-down list.

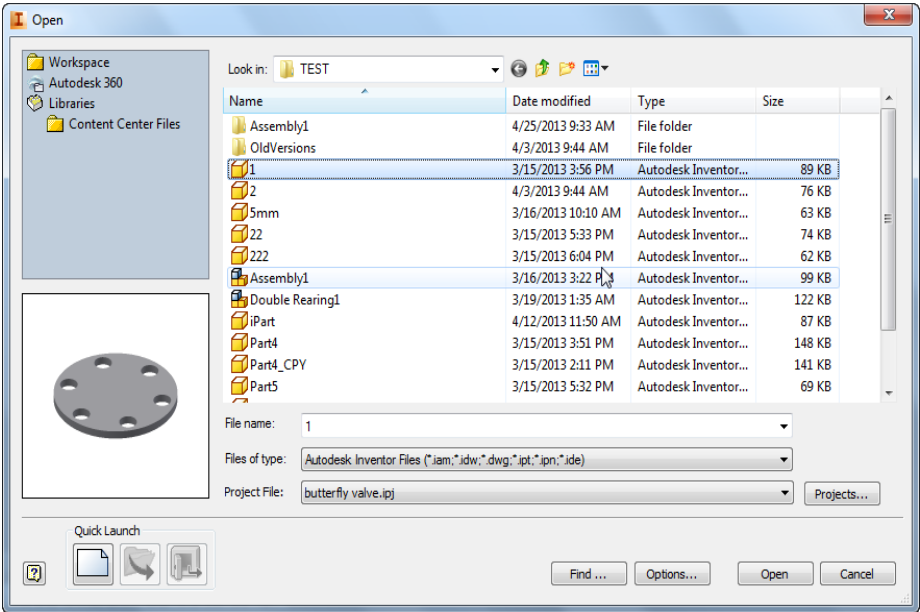


Figure 2-7 The *Open* dialog box showing the preview of the selected file

In addition to open an existing file, you can also start a new files and setup a project by using the **Open** dialog box. To open an existing file, choose the start a new file button of this dialog box. Note that on starting a new session in Autodesk Inventor, the **Start a new file** button will be active in the **Quick Launch** area of the **Open** dialog box. Choose this button; the **Create New File** dialog box will be displayed, as shown in Figure 2-8.

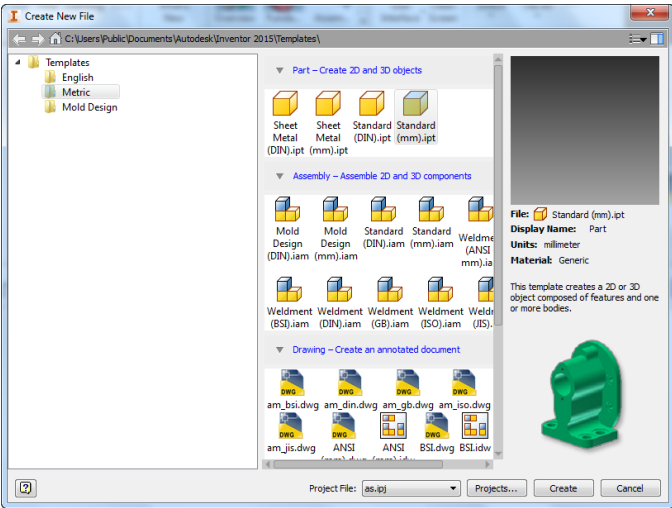


Figure 2-8 The *Create New File* dialog box

By using the **Open** dialog box, you can also invoke the **Project** dialog box to setup a new project. To invoke the **Project** dialog box, choose the **Project** button available on the right of the **Project File** drop down list in the **Open** dialog box. You will learn more about setting a project later in this chapter.

## Setting a New Project

In Autodesk Inventor, a project defines all the files related to a design project you are working on. You can create new projects or retrieve the previously created projects by choosing the **Projects** tool from the **Launch** panel in the **Get Started** tab of initial screen of Autodesk Inventor. When you choose the **Projects** tool, the **Projects** dialog box will be displayed, as shown in Figure 2-9. All the project folders will be displayed in the upper half of the dialog box and the options regarding the selected project folder will be displayed in the lower half of the dialog box. To add another project folder to this list, choose the **New** button; the **Inventor project wizard** dialog box will be displayed. The **New Vault Project** radio button is selected by default in this dialog box. Choose the **Next** button from the **Inventor project wizard** dialog box. Specify the name of the project in the **Name** text box and the location in the **Project (Workspace) Folder** text box. You can also choose the **Browse for project location** button to specify the location of the project. Next, choose the **Finish** button. Once you have specified the project folder, it will be added in the upper part of the **Projects** dialog box and its location will be displayed. When you select a project, the options related to it will be shown in the lower part of the dialog box. The **Projects** dialog box with various projects is shown in Figure 2-8. Choose the **Done** button to close the **Projects** dialog box.

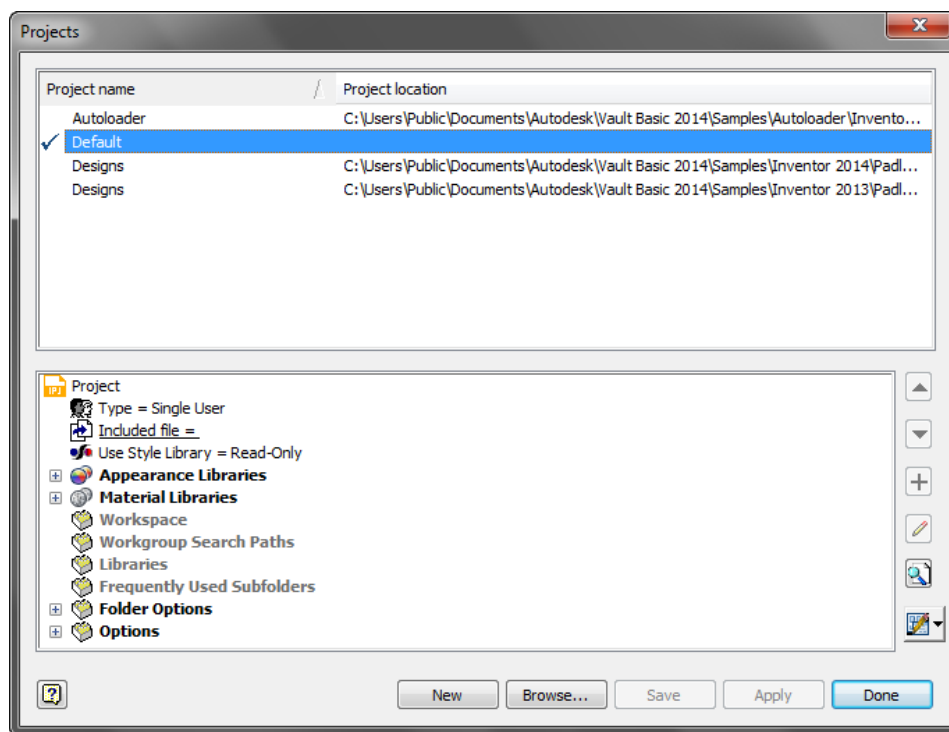


Figure 2-9 The **Projects** dialog box

To view help about topics, press F1; the **Autodesk Inventor Help** window will be displayed. In this window, you will find help topics explaining how to use a particular tool or option of Autodesk Inventor.

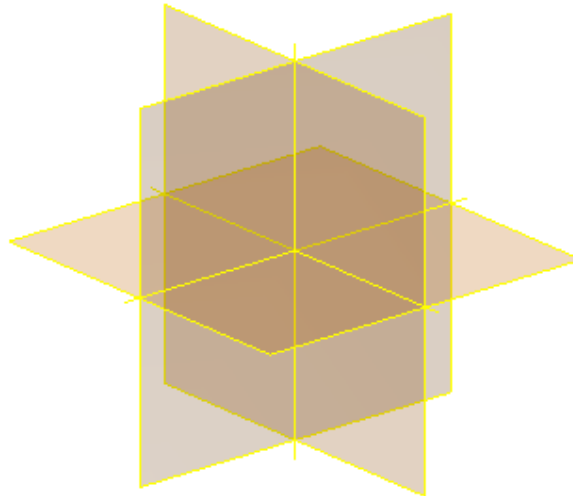
## Import DWG



In Autodesk Inventor, you can import **AutoCAD** files. To do so, choose **Open > Import DWG** from the **Application Menu**; the **Import** dialog box will be displayed. Browse to the desired folder and import the required AutoCAD file.

## INVOKING THE SKETCHING ENVIRONMENT

To invoke the Sketching environment, choose the **Start 2D Sketch** button from the **Sketch** panel in the **3D Model** tab; three different planes namely **XY**, **YZ**, and **XZ** will be displayed in the graphics window, as shown in Figure 2-10. Select the required plane from the graphic window to invoke the Sketching environment.

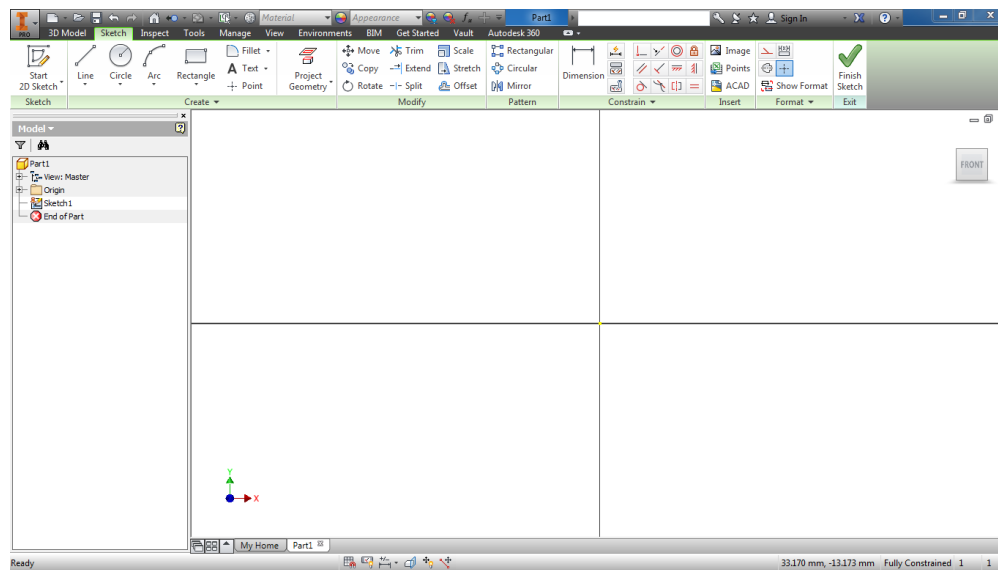


*Figure 2-10 Three different planes displayed in the graphics window*

## INTRODUCTION TO THE SKETCHING ENVIRONMENT

The initial screen appearance in the Sketching environment of a *Standard (mm).ipt* file after selecting the **XY** plane as the sketching plane is shown in Figure 2-11. By default, the **Ribbon** is placed at the top of the graphics window, refer to Figure 2-11. You can move this **Ribbon** anywhere in the graphics window. To do so, right-click on the **Ribbon**; a shortcut menu will be displayed. Choose the **Undock Ribbon** option from the shortcut menu; the **Ribbon** will be undocked. Now, you can drag the **Ribbon** anywhere in the graphics window. It is recommended to place (dock) the **Ribbon** at the top of the graphics window so that you can use the space efficiently. To do so, right-click on the **Ribbon** and choose **Docking Position > Top** from the shortcut menu. Alternatively, double-click on the title bar of the **Ribbon** to dock it.





*Figure 2-11 Initial screen appearance in the sketching environment*

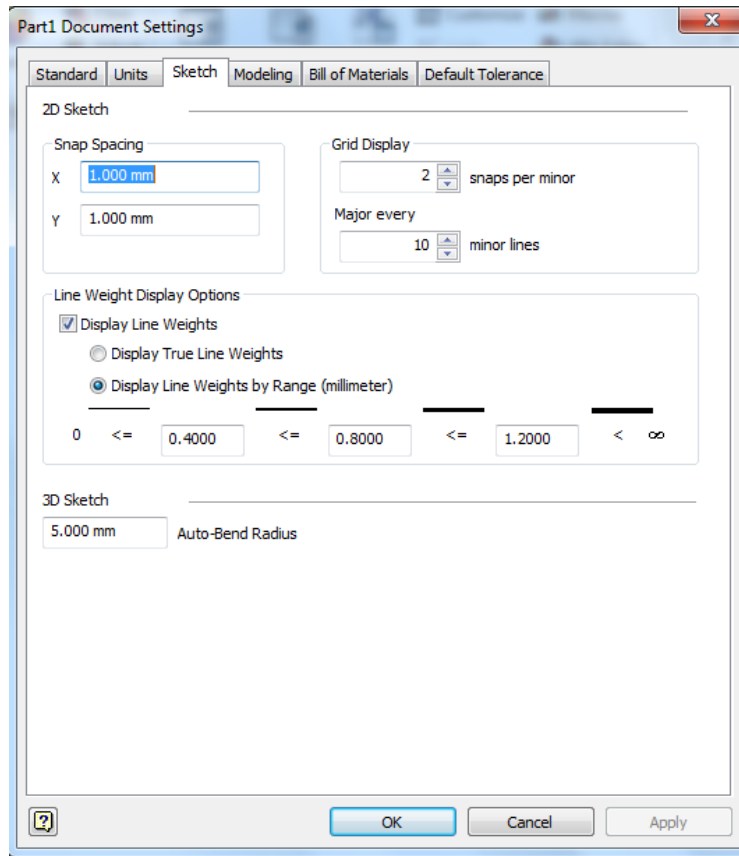
## SETTING UP THE SKETCHING ENVIRONMENT

It is very important to first set up the Sketching environment. This has to be done before you start drawing a sketch. Setting up the Sketching environment includes modifying the grids of a drawing. It is unlikely that the designs that you want to create consist of small dimensions. You will come across a number of designs that are large. Therefore, before starting a drawing, you need to modify the grid settings. These settings will depend on the dimensions of the design. The process of modifying the grid settings of a drawing is discussed next.

### Modifying the Document Settings of a Sketch

Before sketching, you may need to modify the setting of the Sketching environment as per your requirement. You can change the snapping distance, grid spacing, and various attributes related to line display of the sketching environment. You must have noticed that the drawing window in the sketching environment consists of a number of light and dark lines that are normal to each other. These normal lines are called Grid lines. The Grid lines help you locate an entity, thereby helping you to draw a sketch correctly or modify an existing sketch precisely.

You can modify the document settings of a sketch. To do so, choose the **Document Settings** tool from the **Options** panel of the **Tools** tab; the **Part1 Document Settings** dialog box will be displayed. In this dialog box, choose the **Sketch** tab to display the options related to the Sketching environment, refer to Figure 2-12. The options under this tab are discussed next.



*Figure 2-12 The Part1 Document Settings dialog box with the Sketch tab chosen*

## Snap Spacing Area

The options under this area are used to specify the snap distances.

### X Edit box

This edit box is used to specify the snap spacing in the X direction.

### Y Edit box

This edit box is used to specify the snap spacing in the Y direction.

## Grid Display Area

The options in this area are used to control the number of major and minor lines. The minor lines are the light gray lines that are displayed inside the dark gray lines. The dark gray lines are called the major lines.

### Snaps per minor

This spinner is used to specify the number of snap points between each minor line.

**Major every minor lines**

This spinner is used to specify the number of minor lines between two major lines.

**Line Weight Display Options Area**

The options in the **Line Weight Display Options** area allow you to control the line weight in the sketching environment. The **Display Line Weights** check box is selected by default and displays the sketches with the set line weights. If this check box is cleared, then the differences in the line weights will not be displayed in the sketch. The **Display True Line Weights** radio button, if selected, displays the line weights on screen as they would appear on paper when printed. The **Display Line Weights by Range (millimeter)** radio button, if selected, displays the line weights according to the values entered.

**Note**

*You will have to increase the drawing display area after increasing the grid spacing.*



**Tip.** You can also turn off the display of the major and minor grid lines and the axes. To turn off the display of the grid line and the axes, choose the **Application Options** tool from the **Options** panel; the **Application Options** dialog box will be displayed. Next, choose the **Sketch** tab and clear the **Grid lines**, **Minor grid lines**, and **Axes** check boxes from the **Display** area.

**SKETCHING ENTITIES**

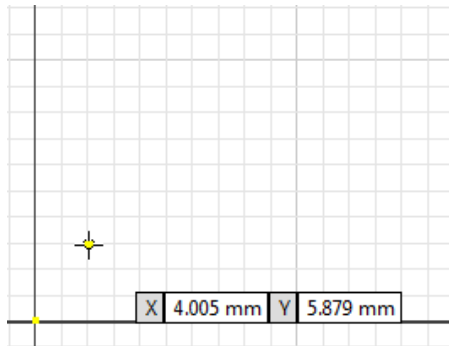
Getting acquainted with the sketching entities is an important part of learning Autodesk Inventor. A major part of the design is created using the sketched entities. Therefore, this section can be considered as one of the most important sections of the book. In Autodesk Inventor, the sketched entities are of two types: **Normal** and **Construction**. The normal entities are used to create a feature and become a part of it, but the construction entities are drawn just for reference and support, and cannot become a part of the feature. By default, all drawn entities are normal entities. To draw construction entities, choose the **Construction** tool from the **Format** panel of the **Sketch** tab. All entities drawn after choosing the **Construction** tool will be the construction entities. Deselect this tool by choosing it again to draw normal entities.

**POSITIONING ENTITIES BY USING DYNAMIC INPUT**

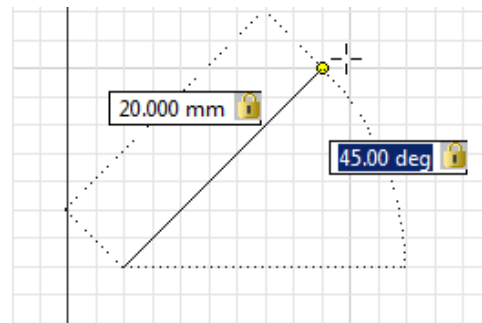
In Autodesk Inventor, you can specify the position of sketching entities by using the Dynamic Input which consists of two components: Pointer Input and the Dimension Input. The Pointer Input is displayed when you invoke the sketching tools such as **Line**, **Rectangle**, **Arc**, and it displays the coordinates of the current location of the cursor. As you move the cursor, the coordinates change dynamically. When you specify the first point, the Pointer Input is displayed. The Pointer Input is displayed in the form of Cartesian Coordinates (X and Y). If you specify the second point or the subsequent points of entities, the Dimension Input will be displayed. The Dimension Input is displayed in the form of polar coordinates (Length and Angle).

To specify the position of sketching entities dynamically, invoke the required sketching tool and then move the cursor in the drawing window; the location of the cursor will be displayed in the cartesian coordinate in the Pointer Input. Press the TAB key and enter the X and Y

coordinate values in the Pointer Input to specify the first point; you will be prompted to specify the endpoint or second point of the entity. Alternatively, you can specify the first point of the entity by clicking in the drawing window. On doing so, the Pointer Input will be modified to the Dimension Input and the polar coordinate input fields will be displayed. To specify the endpoint or second point of the entity, enter the length and angle values in the input fields. To toggle between the length and angle input fields, use the TAB key. If you specify input values by using the Dimension Input and then use the TAB key, lock icons will be displayed on the right of the input fields. The lock icons indicate that the values defined are constrained. Figure 2-13 shows the Pointer Input of a line and Figure 2-14 shows the Dimension Input of the endpoint of a line of length 20 mm at an angle of 45 degrees.



*Figure 2-13 Pointer Input of a line*



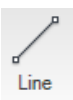
*Figure 2-14 Dimension Input of the endpoint of a line of length 20 mm at 45 degrees*

If some sketched entities exist in the drawing window and you start creating new entities in the drawing window, an appropriate constraint symbol will be displayed near the cursor. You can control the display of the Pointer Input and Dimension Input by using the **Application Options** dialog box. This dialog box can be invoked by choosing the **Application Options** tool from the **Options** panel of **Tools** tab. To control the display of Pointer Input and Dimension Input, choose the **Sketch** tab in the **Application Options** dialog box. Clear the **Enable the Heads-Up Display (HUD)** check box from the **Sketch** tab and choose the **OK** button from this dialog box. As a result, the display of Pointer Input and Dimension Input will be turned off and now you cannot enter the input values of the entities dynamically.

The sketcher entities in Autodesk Inventor are discussed next.

## Drawing Lines

**Ribbon:** Sketch > Create > Line/Spline drop-down > Line



Lines are the basic and one of the most important entities in the sketching environment. As mentioned earlier, you can draw either normal lines or construction lines. A line is defined as the shortest distance between two points. The two points are the start point and the endpoint of the line. Therefore, to draw a line, you need to define these two points. The parametric nature of Autodesk Inventor allows you to draw the initial line of any length or at any angle by just picking the points on the screen. After drawing the line, you can drive it to a new length or angle by using parametric dimensions.

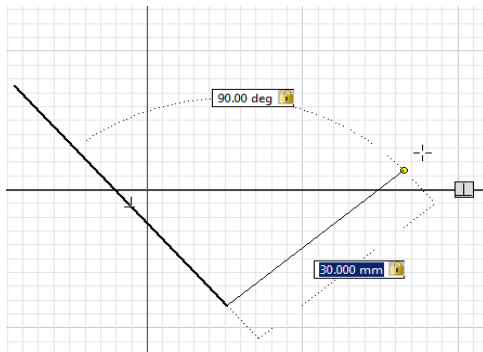
You can also create the line of actual length and angle directly by using the **Inventor Precise Input** toolbar. Both the methods of drawing the lines are discussed next.

### Drawing a Line by Picking Points in the Drawing Window

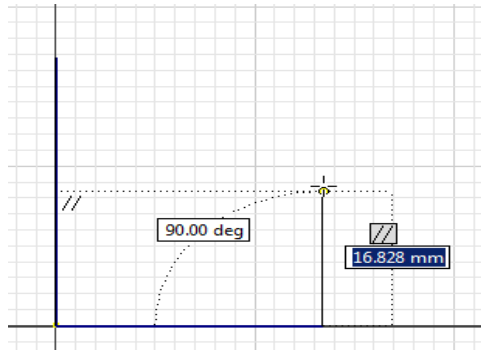
This is a very convenient method to draw lines and is used extensively while sketching. When you invoke the **Line** tool from the **Create** panel, the cursor (which was initially an arrow) is replaced by crosshairs with a yellow circle at the intersection. Alternatively, you can choose the **Create Line** tool from the Marking Menu which is displayed when you right-click anywhere in the graphics window. On doing so, you are prompted to select the start point of the line or drag off the endpoint for the tangent arc. In addition, the coordinates of the current location of the cursor are displayed in the Pointer Input and also at the lower right corner of the Autodesk Inventor window. The point of intersection of the X and Y axes (black lines among grid lines) is the origin point. If you move the cursor close to the origin, it will snap to the origin automatically. To draw a line, specify a point anywhere in the drawing window; the Pointer Input will display both length and angle values as zero. Move the cursor; a rubber-band line will start from the specified point and the length and angle values will change accordingly in the Pointer Input. One end of this rubber-band line is fixed at the point specified in the drawing window and the other end is attached to the yellow circle in crosshairs. As you move the cursor after specifying the start point of the line, the Pointer Input will display the length and angle of the current location of the line. Click at the required position in the drawing window. Alternatively, enter the required length and angle values in the Pointer Input to specify the endpoint of the line. You can use the TAB key to toggle between the length and angle values in the Pointer Input.

After specifying the endpoint of the line, a line is drawn and a new rubber-band line starts. The start point of the new rubber-band line is the endpoint of the last line and you are again prompted to specify the endpoint of the line. You can continue specifying the endpoints to draw continuous lines.

When you draw entities in Autodesk Inventor, valid constraints are applied automatically to entities. Therefore, when you draw continuous lines, the horizontal, vertical, perpendicular, and parallel constraints are applied automatically to them. The symbol of the applied constraint is displayed on the line while drawing it. You can exit the **Line** tool by pressing the ESC key. Alternatively, you can exit the **Line** tool by right-clicking anywhere in the graphics window; a Marking Menu will be displayed. Next, choose **OK** from the Marking Menu. Figures 2-15 and 2-16 display the Perpendicular Constraint and Parallel Constraint, respectively being applied to the lines while they are being drawn.



**Figure 2-15** Drawing a line using the Perpendicular Constraint



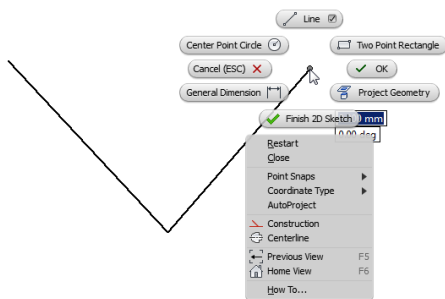
**Figure 2-16** Drawing a line using the Parallel Constraint



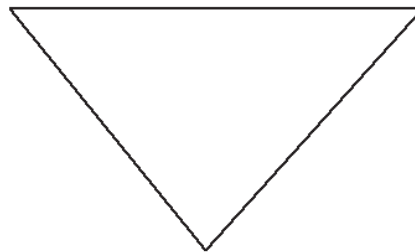
### Note

The default screen appearance in the Sketching environment can be modified for clarity. To do so, choose the **Application Options** tool from the **Options** panel of the **Tools** tab; the **Application Options** dialog box will be displayed. In the dialog box, choose the **Colors** tab and then select the **Presentation** option from the **Color scheme** list box. Next, select **1 Color** from the **Background** drop-down list, and then choose the **Apply** button from the **Application Options** dialog box. The default appearance of the screen is changed in the Sketching environment.

In Inventor, you can close a sketch that has two or more than two lines. To do so, if you have drawn two or more than two continuous lines in the drawing area then on selecting the **Close** option from the Marking menu; a line joining the endpoint of the current line and the start point of the first line will be created and the sketch will be closed. Figure 2-17 shows the **Close** option being chosen from the Marking menu to close the sketch and Figure 2-18 shows the closed sketch created. Note that the **Close** option will not be displayed in the Marking menu once you terminate the creation of continuous lines.



**Figure 2-17** Choosing the **Close** option from the Marking Menu



**Figure 2-18** Closed sketch created

### Drawing a Line by using the Inventor Precise Input toolbar

This is another method of drawing lines in Autodesk Inventor. In this method, you use the **Inventor Precise Input** toolbar to define the coordinates of the start point and the endpoint of lines. To display the **Inventor Precise Input** toolbar for the line, first invoke the **Line** tool. Next, click on the down arrow displayed at bottom of the **Create** panel in the **Sketch** tab; the **Create** panel will expand. Choose the **Precise Input** tool from this panel. As mentioned earlier, the origin of the drawing lies at the intersection of the X and Y axes. The X and Y coordinates of this point are 0, 0. You can take the reference of this point to draw lines. There are two methods to define the coordinates using this toolbar. Both the methods are discussed next.

#### Specifying Coordinates with respect to the Origin

The system that define the coordinates with respect to the origin of the drawing is termed as the **absolute coordinate system**. By default, the origin lies at the intersection of the X and Y axes. All the points in this system are defined with respect to this origin. To define the points, you can use the following four methods.

**Defining the Absolute X and Y Coordinates.** In this method, you will define the X and Y coordinates of the new point with respect to the origin. To invoke this method, select the **Indicate a point location by typing X and Y values** option from the drop-down list in the **Inventor Precise Input** toolbar. The exact X and Y coordinates of the point can be entered in the **X** and **Y** edit boxes provided in this toolbar.

**Defining the Absolute X Coordinate and the Angle from the X Axis.** In this method, you will define the absolute X coordinate of a point with respect to the origin and the angle that this line makes with the positive X axis. The angle will be measured in the counterclockwise direction from the positive X axis. To invoke this method, select the **Specify a point using X coordinate and angle from X axis** option from the drop-down list. The X coordinate of the new point and the angle can be defined in the respective edit boxes in the **Inventor Precise Input** toolbar.

**Defining the Absolute Y Coordinate and the Angle from the X Axis.** In this method, you will define the absolute Y coordinate of a point with respect to the origin and the angle that this line makes with the positive X axis. To invoke this method, select the **Specify a point using Y coordinate and angle from X axis** option from the drop-down list. The Y coordinate of the new point and the angle can be defined in the respective edit boxes in the **Inventor Precise Input** toolbar.

**Specifying the Distance from the Origin and the Angle from the X Axis.** In this method, you will define the distance of the point from the origin and the angle that this line makes with the X axis. To invoke this method, select the **Specify a point using distance from the origin and angle from X axis** option from the drop-down list. The distance and the angle can be defined in the respective edit boxes.

#### Specifying Coordinates with respect to the Last Point

This system of specifying the coordinates with respect to the previous point is termed as the **relative coordinate system**. Note that this system of defining the points cannot be used for specifying the first point (the start point of the line). All absolute coordinate methods



for specifying a point with respect to the origin can also be used with respect to the last specified point by choosing the **Precise Delta** button along with the respective method. This button will be available only after you specify the start point of the first line.



### Note

*While drawing continuous lines, when you move the cursor close to the start point of the first line, the yellow circle changes to green and the cursor snaps to the start point. On selecting the point at this stage, the loop will be closed and you will exit the current line chain.*

*To draw center lines, first choose the **Centerline** tool from the **Format** panel and then create the line. Alternatively, select the required entities from the drawing window and then choose the **Centerline** tool; the selected entities will become center lines.*

## Restarting a Line

To restart a line, right-click in the graphics window and choose **Restart** from the Marking Menu; the start point of the line is cancelled and you are prompted to select the start point of the line.

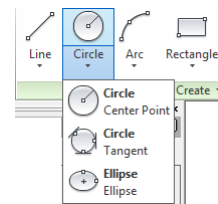
## Drawing Circles

In Autodesk Inventor, you can draw circles by using two methods. You can draw a circle by defining the center and the radius of the circle or by drawing a circle that is tangent to three specified lines. Both these methods of drawing the circle are discussed next.

### Drawing a Circle by Specifying the Center Point and Radius

**Ribbon:** Sketch > Create > Circle drop-down > Circle Center Point

This is the default method of drawing circles. In this method, you need to define the center point and radius of a circle. To draw a circle using this method, choose the **Circle Center Point** tool from the **Create** panel, refer to Figure 2-19; you will be prompted to select the center of the circle. Specify the center point of the circle in the drawing window; you will be prompted to specify a point on the circle. Click at the required location in the drawing window to specify a point on the circumference of the circle. This point will define the radius of the circle. Alternatively, enter the required value in the Pointer Input to specify the diameter of the circle. You can also specify the center and the radius using the **Inventor Precise Input** toolbar. Figure 2-20 shows a circle drawn by using the center and the radius.



**Figure 2-19** Tools in the Circle drop-down

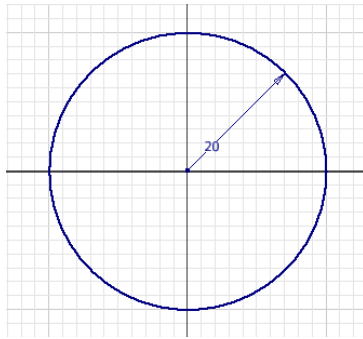
### Drawing a Circle by Specifying Three Tangent Lines

**Ribbon:** Sketch > Create > Circle drop-down > Circle Tangent

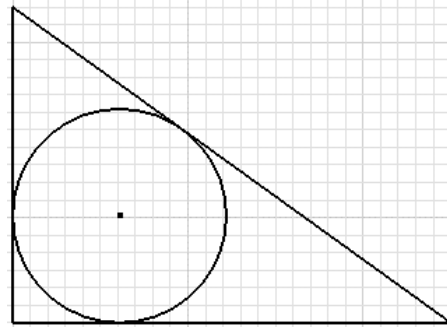


The second method of drawing circles is used to draw it tangent to three selected lines. To draw a circle using this method, choose the **Circle Tangent** tool from the **Draw** panel, refer to Figure 2-19; you will be prompted to select the first, second, and third line, sequentially. As soon as you specify the third line, a circle tangent to all the three specified lines will be drawn, as shown in Figure 2-21.





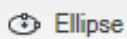
**Figure 2-20** Circle drawn using the center point and radius



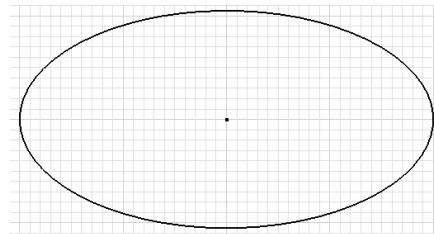
**Figure 2-21** Circle drawn using three tangent lines

## Drawing Ellipses

**Ribbon:** Sketch > Create > Circle drop-down > Ellipse



To draw an ellipse, choose the **Ellipse** tool from the **Create** panel; you will be prompted to specify the center of the ellipse. Select a point to specify the center of the ellipse; you will be prompted to specify the first axis point. Specify a point to define the first axis of the ellipse; you will be prompted to select a point on the ellipse. Select a point on the ellipse; the ellipse will be created. You can also specify these points using the **Inventor Precise Input** toolbar. However, remember that you cannot use the relative options for defining the points of the ellipse. Therefore, if you use the **Inventor Precise Input** toolbar for drawing the ellipse, all the values will be specified from the origin. However, you can redefine the origin by choosing the **Precise Redefine** button and placing it at the point that you want to define at the origin. Figure 2-22 shows an ellipse drawn in the Sketching environment.



**Figure 2-22** An ellipse drawn in the Sketching environment

## Drawing Arcs

Autodesk Inventor provides three methods for drawing arcs. These methods are discussed next.

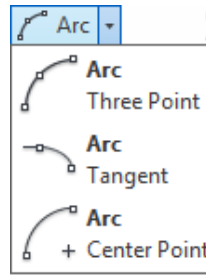
### Drawing an Arc by Specifying Three Points

**Ribbon:** Sketch > Create > Arc drop-down > Arc Three Point



This is the default method of drawing arcs. To create an arc with three points, choose the **Arc Three Point** tool from the **Create** panel, see Figure 2-23, and then specify three points. The first point is the start point of the arc, the second point is the endpoint of the arc, and the third point is a point on the arc. You can define these points by specifying them in the drawing window or by using the **Inventor Precise Input** toolbar. You

can also use the Pointer Input for specifying the second and the third point of the arc. Figure 2-24 shows an arc drawn using this method.



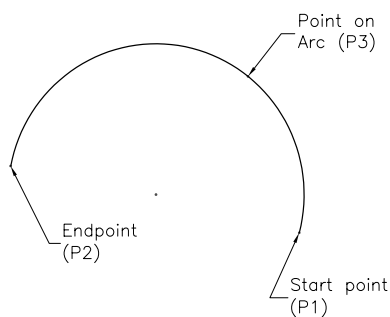
*Figure 2-23 Tools in the Arc drop-down*

## Drawing an Arc Tangent to an Existing Entity

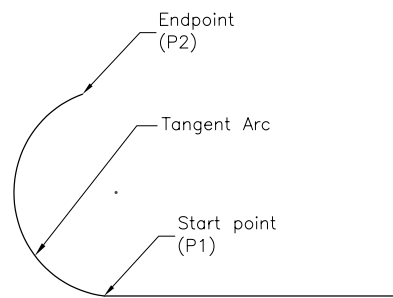
**Ribbon:** Sketch > Create > Arc drop-down > Arc Tangent



This method is used to draw an arc that is tangent to an existing open entity. The open entity can be an arc or a line. To draw an arc using this method, choose the **Arc Tangent** tool from the **Create** panel (see Figure 2-23); you will be prompted to select the start point of the arc. The start point of the arc must be the start point or endpoint of an existing open entity. Once you specify the start point, a rubber-band arc will start from it. Note that this arc is tangent to the selected entity. Now, you will be prompted to specify the endpoint of the arc. Click on the drawing window to specify the endpoint of the arc. Alternatively, enter the radius and the angle values in the Pointer Input to specify the endpoint of the arc. Here, it is very important to mention that the **Inventor Precise Input** toolbar or the Pointer Input cannot be used to select the start point of this arc. However, you can use this toolbar to specify the endpoint of this arc. Figure 2-25 shows an arc drawn tangent to the line.



*Figure 2-24 Drawing the three points arc*



*Figure 2-25 Drawing the tangent arc*

## Drawing a Tangent/Normal Arcs by Using the Line Tool

You can also draw a tangent or a normal arc when the **Line** tool is activated. At least a line or an arc should be drawn before drawing an arc using this method. To do so, draw a line or an arc and then invoke the Line tool; you are prompted to select the start point of the line. Move the cursor close to the point from where you want to start the tangent or normal arc.

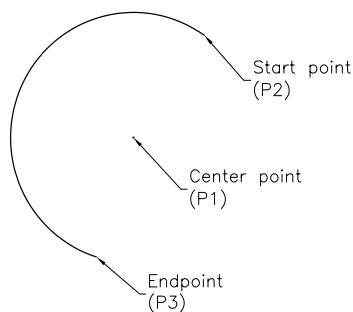
the yellow circle in the cursor turns green. Select the point at this stage; the green circle in the cursor turns gray. Press the left mouse button and drag the mouse; four construction lines appear at the start point displaying the normal and tangent directions. If you drag along the tangent direction, a tangent arc is drawn. But if you drag along the normal direction, an arc normal to the selected entity is drawn.

## Drawing an Arc by Specifying the Center, Start, and End points

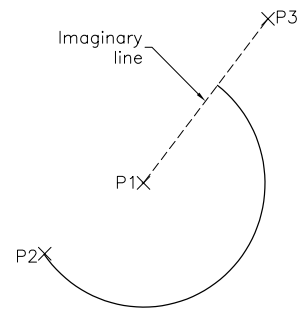
**Ribbon:** Sketch > Create > Arc drop-down > Arc Center Point



This method is used to draw an arc by specifying the center point, start point, and endpoint of the arc. To draw an arc using this method, choose the **Arc Center Point** tool from the **Create** panel (see Figure 2-23). On doing so, you will be prompted to specify the center point of the arc. Once you specify the center point of the arc, you will be prompted to specify the start point and then the endpoint of the arc, refer to Figure 2-26. You can also specify the start point and endpoint of the arc by using the Pointer Input. In case of start point, you need to specify the radius and angle of the arc from the center point. Whereas, in case of endpoint, you need to specify the arc length in terms of angle value. You can use the TAB key to toggle between the input values of the Pointer Input. As you define the center point and the start point, the radius of the arc will be defined automatically. So, the third point is just used to define the arc length. An imaginary line is drawn from the cursor to the center of the arc. The point at which the arc intersects the imaginary line will then be taken as the endpoint of the arc, see Figure 2-27. You can also use the **Inventor Precise Input** toolbar to specify these three points of the arc.



**Figure 2-26** The arc created by specifying the center, start, and end points



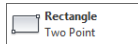
**Figure 2-27** The imaginary line created while drawing the center point arc

## Drawing Rectangles

In Autodesk Inventor, rectangles can be drawn by using two methods that are discussed next.

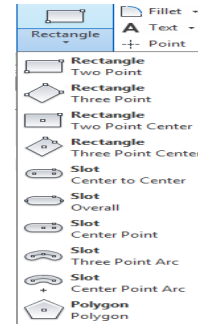
## Drawing a Rectangle by Specifying Two Opposite Corners

**Ribbon:** Sketch > Create > Rectangle/Slot drop-down > Rectangle Two Point



This is the default method used to draw a rectangle specifying its two opposite corners. To draw a rectangle by using this method, choose the

**Rectangle Two Point** tool from the **Create** panel, see Figure 2-28; you will be prompted to specify the first corner of the rectangle and the Pointer Input will be displayed. Click at the required location to specify the first corner of the rectangle. Once you specify the first corner, you will be prompted to specify the opposite corner of the rectangle and the Pointer Input will be modified. Click to specify the second corner or enter the length and height of the rectangle in the Pointer Input. Figure 2-29 shows a rectangle drawn using the **Rectangle Two Point** tool.



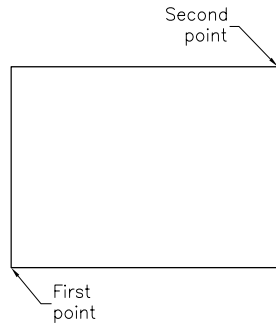
*Figure 2-28 Tools in the Rectangle/Slot drop-down*

## Drawing a Rectangle by Specifying Three Points on a Rectangle

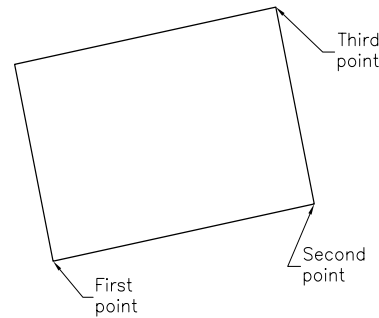
**Ribbon:** Sketch > Create > Rectangle/Slot drop-down > Rectangle Three Point



You can draw a rectangle by specifying its three points. In this method, the first two points are used to define the length and angle of one of the sides of the rectangle and the third point is used to define the length of the other side. To create a rectangle by using this method, choose the **Rectangle Three Point** tool from the **Rectangle/Slot** drop-down of the **Create** panel of the **Sketch** tab, see Figure 2-28; you will be prompted to specify the first corner of the rectangle. Once you specify it, you will be prompted to specify the second corner of the rectangle. Both these corners are along the same direction. As a result, you can use these points to define the length of one side of the rectangle. After specifying the second corner, you will be prompted to specify the third corner. This corner is used to define the length of the other side of the rectangle. Note that if you specify the second corner at a certain angle, then the resultant rectangle will also be inclined. You can also specify the first, second, and third points of the rectangle by using the Pointer Input. In case of second point, you need to specify the length and angle of rectangle in the input value fields of the Pointer Input. Whereas, in case of endpoint, you need to specify the height of the rectangle. You can use the TAB key to toggle between the input values of the Pointer Input. You can also specify the three points for drawing the rectangle using the **Inventor Precise Input** toolbar. Figure 2-30 shows an inclined rectangle drawn by using the **Three Point Rectangle** tool.



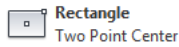
**Figure 2-29** Drawing a rectangle using two points



**Figure 2-30** An rectangle drawn using the **Three-Point Rectangle** tool

## Drawing a Rectangle by Specifying its Two Points

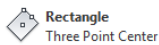
**Ribbon:** Sketch > Create > Rectangle/Slot drop-down > Rectangle Two Point Center



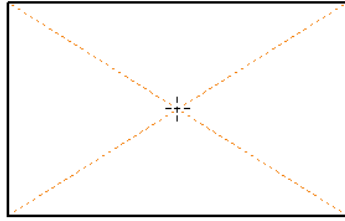
You can also draw a rectangle by specifying its two points. In this method, the first point is used to define the center of the rectangle and the second point is used to define the length and width of the rectangle. To create a rectangle by using this method, choose the **Rectangle Two Point Center** tool from the **Rectangle/Slot** drop-down of the **Create** panel in the **Sketch** tab, refer to Figure 2-28; you will be prompted to specify the center of the rectangle. Click in the Graphics window to specify it and move the cursor toward left or right; the Pointer Input will be displayed. Enter the length and width of the rectangle in the Pointer Input. Figure 2-31 shows a rectangle drawn using the **Rectangle Two Point Center** tool.

## Drawing a Rectangle by Specifying Three Different Points on a Rectangle

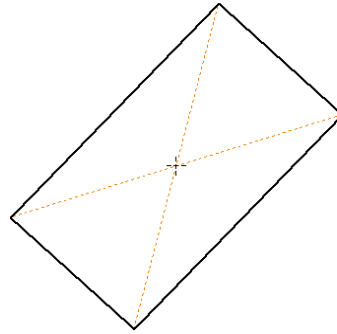
**Ribbon:** Sketch > Create > Rectangle/Slot drop-down > Rectangle Three Point Center



You can also draw a rectangle by specifying its three points. In this method, the first point is used to define the center of the rectangle, the second point is used to define the length and orientation of the rectangle, and the third point is used to define the width of the rectangle. To create a rectangle by this method, choose the **Rectangle Three Point Center** tool from the **Rectangle/Slot** drop-down in the **Create** panel of the **Sketch** tab, refer to Figure 2-28; you will be prompted to specify the center of the rectangle. Click at the required location to specify the center; Pointer Input will be displayed. Now, move the cursor and click to specify the first corner point and orientation of the rectangle. Again, move the cursor to specify the second corner point of the rectangle. Figure 2-32 shows a rectangle drawn using the **Rectangle Three Point Center** tool.



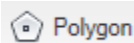
**Figure 2-31** Drawing a rectangle by using the **Rectangle Two Point Center** tool



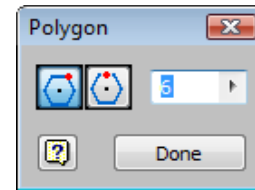
**Figure 2-32** Drawing a rectangle by using the **Rectangle Three Point Center** tool

## Drawing Polygons

**Ribbon:** Sketch > Create > Rectangle/Slot drop-down > Polygon



The polygons drawn in Autodesk Inventor are regular polygons. A regular polygon is a multi-sided geometric figure in which the length of all sides and the angle between them are same. In Autodesk Inventor, you can draw a polygon with the number of sides ranging from 3 to 120. When you invoke the **Polygon** tool, the **Polygon** dialog box will be displayed, as shown in Figure 2-33, and you will be prompted to select the center of the polygon. The options in this dialog box are discussed next.



**Figure 2-33** The **Polygon** dialog box

### Inscribed



This is the first button in the **Polygon** dialog box and is chosen by default. This option is used to draw an inscribed polygon. An inscribed polygon is the one that is drawn inside an imaginary circle such that its vertices touch the circle. Once you have specified the polygon center, you will be prompted to specify a point on the polygon. In case of an inscribed polygon, the point on the polygon specifies one of its vertices, see Figure 2-34.

### Circumscribed



This is the second button in the **Polygon** dialog box and is used to draw a circumscribed polygon. A circumscribed polygon is the one that is drawn outside an imaginary circle such that its edges are tangent to the imaginary circle. In case of a circumscribed polygon, the point on the polygon is the midpoint of one of the polygon edges, see Figure 2-35.

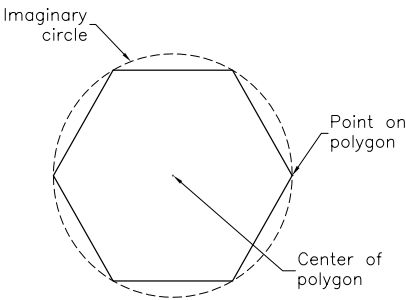
### Number of Sides

This edit box is used to specify the number of sides of the polygon. The default value is 6. You can enter any value ranging from 3 to 120 in this edit box.

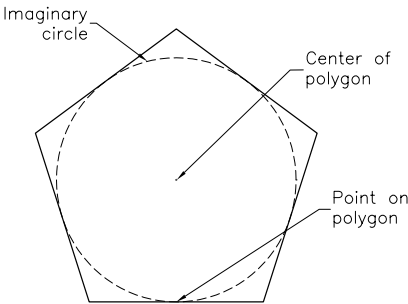


**Note**

The rectangles and polygons are a combination of individual lines. All the lines can be separately selected or deleted. However, when you select one of the lines and drag, the entire rectangle or polygon will be considered as a single entity. As a result, the entire object will be moved or stretched.



**Figure 2-34** Drawing a six-sided inscribed polygon



**Figure 2-35** Drawing a five-sided circumscribed polygon

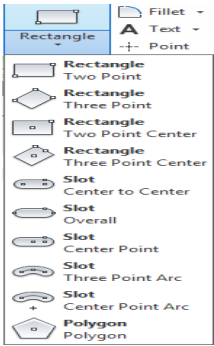
**Drawing Slots**

In Autodesk Inventor, you can draw linear or arched slots by using the Slot tools available in the **Rectangle/Slot** drop-down of the **Create** panel in the **Ribbon**, refer to Figure 2-36. The methods of drawing slots are discussed next.

**Drawing a Center to Center Slot**

**Ribbon:** Sketch > Create > Rectangle/Slot drop-down > Slot Center To Center

To create a center to center slot, choose the **Slot Center to Center** tool from the **Rectangle/Slot** drop-down; you will be prompted to specify the start center point. Click in the drawing window to specify the start center point, you will be prompted to specify the end center point. Now, you can specify the end point by specifying distance in dynamic prompt or by clicking in the graphics window to specify the point. Specify the end center point; you will be prompted to specify the diameter or width of the slot. Specify the width or diameter in the dynamic prompt; the slot will be created. This type of slot is called the linear slot. Figure 2-37 shows a Center to Center Slot created.



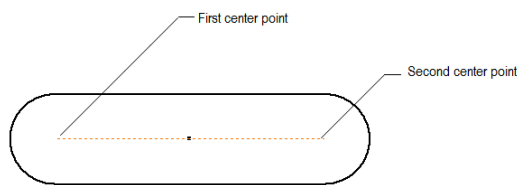
**Figure 2-36** The *Slot* drop-down

## Drawing an Overall Slot

**Ribbon:** Sketch > Create > Rectangle/Slot drop-down > Slot Overall



To create an Overall Slot, choose the **Slot Overall** tool from the **Rectangle/Slot** drop-down; you will be prompted to specify the start point. Click in the graphics window to specify the start point; you will be prompted to specify the end point. Now, you can specify the end point by specifying the distance in dynamic prompt or clicking in the graphics window. Specify the end point; you will be prompted to specify the diameter or width of the slot. Specify the width or diameter in the dynamic prompt; the slot will be created. This type of slot is also called the linear slot. Figure 2-38 shows an Overall Slot created.



*Figure 2-37 Center to Center Slot*



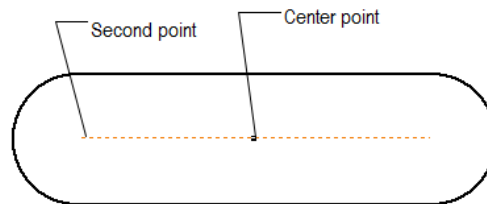
*Figure 2-38 Overall slot*

## Drawing a Center Point Slot

**Ribbon:** Sketch > Create > Rectangle/Slot drop-down > Slot Center Point



To create a Center Point Slot, choose the **Slot Center Point** tool from the **Rectangle/Slot** drop-down; you will be prompted to specify the center point of the slot. Click in the graphics window to specify the center point of the slot; you will be prompted to specify the second point. You can specify the distance of the second point either by using the dynamic prompt or clicking in the graphics window. Specify the second point; you will be prompted to specify the diameter or width of the slot. Specify the width or diameter in the dynamic prompt; the slot will be created. This type of slot is also called the linear slot. Figure 2-39 shows a Center Point Slot created.



*Figure 2-39 Center Point Slot created*

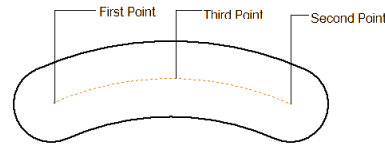


## Drawing a Three Point Arc Slot

**Ribbon:** Sketch > Create > Rectangle/Slot drop-down > Slot Three Point Arc



To create a Three Point Arc slot, choose the **Slot Three Point Arc** tool from the **Rectangle/Slot** drop-down; you will be prompted to specify the start point of the center arc. Click in the graphics window to specify the start point of center arc; you will be prompted to specify the end point. Now you can specify the end point either by specifying length in the dynamic prompt or by clicking in the graphics window; you will be prompted to specify the third point of the center arc. Specify the third point; you will be prompted to specify the diameter or width of the slot. Specify the width or diameter in the dynamic prompt; the slot will be created. This type of slot is called the arc slot. Figure 2-40 shows a Three Point Arc slot created.



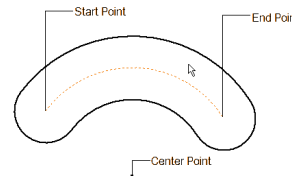
**Figure 2-40** Three Point Arc Slot created

## Drawing a Center Point Arc Slot

**Ribbon:** Sketch > Create > Rectangle/Slot drop-down > Slot Center Point Arc



To create a Center Point Arc slot, choose the **Slot Center Point Arc** tool from the **Rectangle/Slot** drop-down; you will be prompted to specify the center of the Center Point Arc. Specify the center; you will be prompted to specify the start point of the arc. Specify the start point by entering angle value in the dynamic prompt; you will be prompted to specify the end point. Specify the end point by entering angle value in the dynamic prompt; you will be prompted to specify the diameter or width of the slot. Specify the width or diameter in the dynamic prompt; the slot will be created. This type of slot is also called the arc slot. Figure 2-41 shows a Center Point Arc slot created.



**Figure 2-41** Center Point Arc Slot created

## Placing Points

**Ribbon:** Sketch > Create > Point



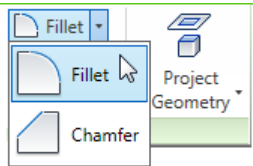
In Autodesk Inventor, you can place the sketched points in a sketch by using the **Point** tool. To place a point, choose the **Point** tool from the **Create** panel of the **Sketch** tab; you will be prompted to select the center point. Specify the center point; a point will be placed. You can specify the location of a point in the sketch by picking a point from the Graphics window or by entering the value in the **Inventor Precise Input** toolbar.

### Creating Fillets

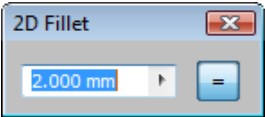
**Ribbon:** Sketch > Create > Fillet/Chamfer drop-down > Fillet



Filleting is defined as the process of rounding the sharp corners of a sketch. This is done to reduce the stress concentration in the model and for smooth handling. Using the **Fillet** tool, you can round the corners of the sketch by creating an arc tangent to both the selected entities. The portions of the selected entities that comprise the sharp corners are trimmed when the fillet is created. When you invoke this tool from the **Fillet/Chamfer** drop-down, refer to Figure 2-42, the **2D Fillet** dialog box will be displayed with the default fillet radius, as shown in Figure 2-43, and you will be prompted to select the lines or the arcs to be filleted. If you have already created some fillets, their radius values will be stored as preset values. You can select these preset values from the list that is displayed when you choose the arrow provided on the right of the edit box.

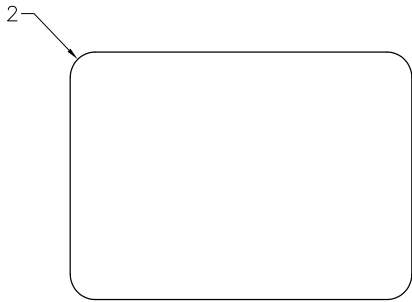


**Figure 2-42** Tools in the **Fillet/Chamfer** drop-down

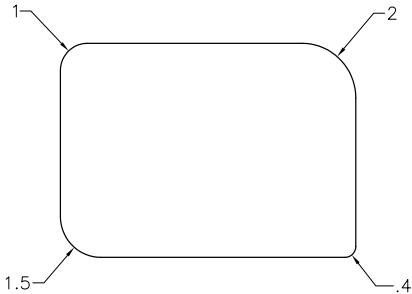


**Figure 2-43** The **2D Fillet** dialog box

You can create any number of fillets of similar or dissimilar radii. If the **Equal** button in the **2D Fillet** dialog box is chosen, the dimension of the fillet will be placed only on the first fillet and not on the other fillets created by using the same sequence, see Figure 2-44. On modifying the dimension of the first fillet, all instances of fillet will be modified. To create fillets of independent radii values, deactivate the **Equal** button before creating fillets. The fillets thus created will show individual dimensions, see Figure 2-45. As a result, you can modify the dimension of one fillet without affecting the other. You can fillet two parallel or perpendicular lines, intersecting lines or arcs, non-intersecting lines or arcs, and a line and an arc.



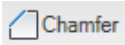
**Figure 2-44** Rectangle filleted using the same radius with the **Equal** button chosen



**Figure 2-45** Rectangle filleted using different radii with the **Equal** button deactivated

# Creating Chamfers

**Ribbon:** Sketch > Create > Fillet/Chamfer drop-down > Chamfer

 Chamfering is defined as the process of beveling the sharp corners of a sketch. This is the second method of reducing stress concentration. To chamfer sketched entities, choose the **Chamfer** tool from the **Create** panel (see Figure 2-42); the **2D Chamfer** dialog box will be displayed, as shown in Figure 2-46. Also, you will be prompted to select the lines to be chamfered. Select the lines; the chamfer will be created. The options in the **2D Chamfer** dialog box are discussed next.

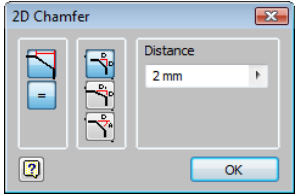




Figure 2-46 The 2D Chamfer dialog box


## Create Dimensions

 The **Create Dimensions** button is chosen to show the dimensions of the chamfer on the sketch. When you chamfer two lines, the dimensions of the chamfer are shown in the sketch. If you choose this button again, the chamfer dimensions will not be displayed in the sketch when you create another chamfer.

## Equal

 The **Equal** button is chosen to create multiple chamfers with the same parameters. This button is enabled only if the **Create Dimensions** button is chosen.

## Equal Distance

 The **Equal Distance** button is chosen to create an equal distance chamfer. The distance of the vertex along the two selected edges is the same. As a result, a 45-degree chamfer is created using this method. The distance value is specified in the **Distance** edit box. If the **Create Dimension** button is chosen, two dimensions of the same value will be shown in the sketch, as shown in Figure 2-47.

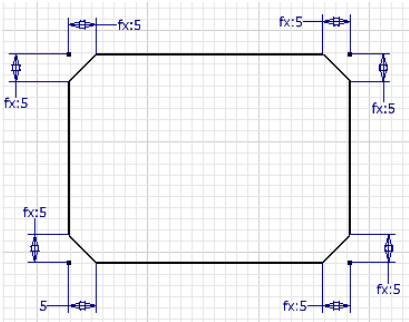


Figure 2-47 Chamfer with dimension values

## Unequal Distances

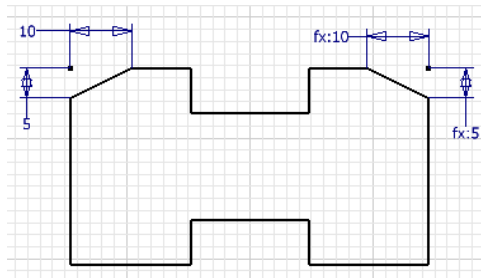


The **Unequal Distances** button is chosen to create a chamfer with two different distances. The distance values are specified in the **Distance1** and **Distance2** edit boxes. The distance value specified in the **Distance1** edit box is measured along the edge selected first. Similarly, the value in the **Distance2** edit box is measured along the edge selected next. Figure 2-48 shows a chamfer created by using the **Unequal Distances** button.

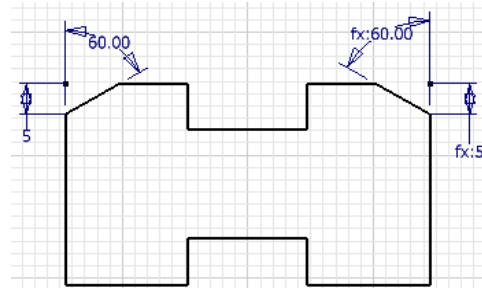
## Distance and Angle



The **Distance and Angle** button is chosen to create a chamfer by specifying a distance and an angle. On choosing this button, the distance needs to be specified in the **Distance** edit box and the angle in the **Angle** edit box. The specified angle is measured from the first edge selected to chamfer, see Figure 2-49.



**Figure 2-48** The chamfer created using the *Unequal Distances* button



**Figure 2-49** The chamfer created using the *Distance and Angle* button



**Tip.** 1. If multiple chamfers are created with same values, the dimension value is displayed only at the first instance. At the remaining chamfers, the dimension will be displayed as *fx* of the value, which means the function of the original value.

2. You can also select the vertex to create a fillet or chamfer. The two entities forming the selected vertex will be filleted or chamfered using the current parameters.

## Drawing Splines

Autodesk Inventor provides three methods for drawing splines. These methods are discussed next.

### Drawing a Spline by Using the Spline Interpolation Tool

**Ribbon:** Sketch > Create > Line/Spline drop-down > Spline Interpolation



To draw a spline, choose the **Spline Interpolation** tool from the **Line/Spline** drop-down of the **Create** panel, refer to Figure 2-50; you will be prompted to specify the first point of the spline. Specify the first point; you will be prompted to specify the next point of the spline. This process will continue until you terminate the spline creation. To end the spline at the current point, double-click in the drawing window or right-click to display the Marking Menu and choose **Create**. Note that if you choose **Cancel(ESC)** from the Marking Menu, the spline will not be drawn. You can also end the spline creation by pressing the ENTER key. Note that after creating a spline, the square and diamond points will be displayed on the spline along with the tangent handles, as shown in Figure 2-51. You can drag these square and diamond points to modify the shape of the spline. To exit the command, press the ESC key or choose **Cancel(ESC)** from the Marking Menu.

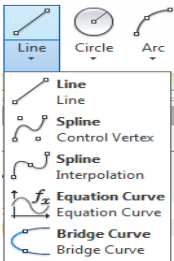


Figure 2-50 Tools in the Line/Spline drop-down

You can undo the last drawn spline segment while drawing a spline. This can be done by choosing the **Back** option from the Marking Menu which is displayed when you right-click anywhere in the graphics window. You can also draw a spline tangent to an existing entity. To draw the tangent spline, select the point where the spline should be tangent. Next, hold the left mouse button and drag it; a construction line will be drawn, displaying the possible tangent directions for the spline. Drag the mouse in the required direction to draw the tangent spline and release the left mouse button. Figure 2-52 shows a spline drawn tangent to an existing line.



**Tip.** Autodesk Inventor allows you to invoke the last used tool by right-clicking anywhere in the drawing window and selecting the **Repeat (name of the last used tool)** from the Marking menu. For example, the **Repeat Line** option will be available in the Marking Menu, if the line tool was the last used tool. Alternatively, you can press the SPACEBAR key to invoke the last used tool.

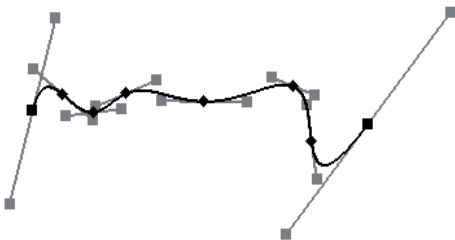


Figure 2-51 A spline drawn by specifying different points

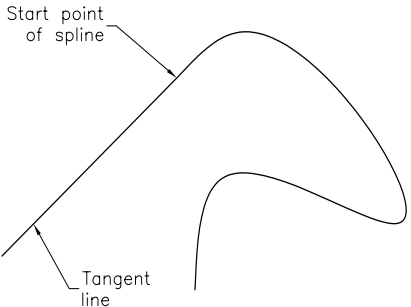
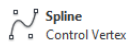


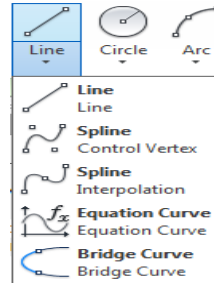
Figure 2-52 A spline drawn tangent to a line

## Drawing a Spline by Specifying Control Vertices

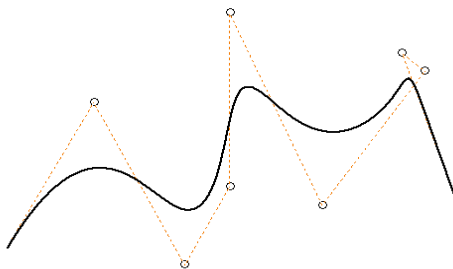
**Ribbon:** Sketch > Create > Line/Spline drop-down > Spline Control Vertex



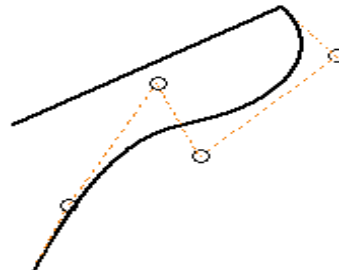
To draw a spline, choose the **Spline Control Vertex** tool from the **Line/Spline** drop-down in the **Create** panel, see Figure 2-53; you will be prompted to specify the first point of the spline. Specify the start point; you will be prompted to specify the next point of the spline. This process will continue until you terminate the spline creation. To end the spline at the current point, double-click in the drawing window or right-click to display the Marking Menu and choose **Create**. Note that if you choose **Cancel (ESC)** from the Marking Menu, the spline will not be drawn. You can also end the spline creation by pressing the ENTER key. Note that after creating a spline, the control vertices will be displayed on the spline along with the tangent handles, as shown in Figure 2-54. You can drag these control vertices to modify the shape of the spline. These control vertices act as poles for controlling the shape of the splines. Figure 2-55 shows a spline drawn tangent to a line. To exit the command, press the ESC key on the keyboard or choose **OK** from the Marking menu.



**Figure 2-53** *Spline Control Vertex tool to be chosen in the Line/Spline drop-down*



**Figure 2-54** *A spline drawn by specifying different control vertices*



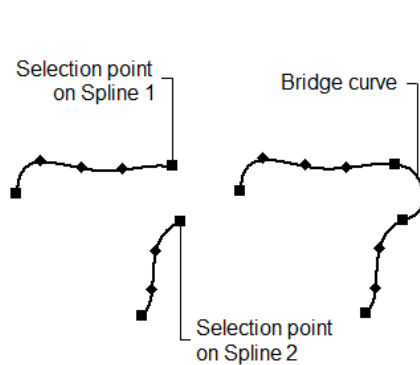
**Figure 2-55** *A spline drawn tangent to a line*

## Creating a Smooth Curve between the Two Existing Curves

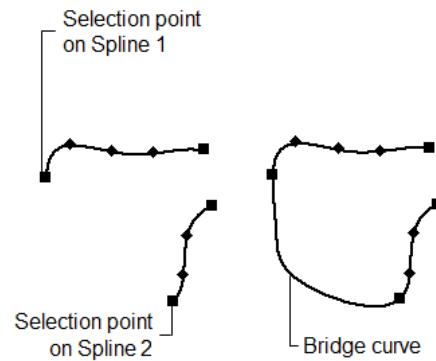
**Ribbon:** Sketch > Create > Line/Spline drop-down > Bridge Curve



In Autodesk Inventor, you can create a smooth (G2) continuous curve between two existing curves. The existing curves can be arcs, lines, splines, or projected curves. To create a smooth curve, choose the **Bridge Curve** tool from the **Line/Spline** drop-down in the **Create** panel of the **Sketch** tab, refer to Figure 2-53; you will be prompted to select the curves one after the other. Select the two curves; a smooth G2 continuous curve, known as bridge curve, will be created between the selected curves. The profile of the bridge curve depends on the position of the points selected on the existing curves. Figure 2-56 shows two points selected on the two curves and the resulting bridge curve. Figure 2-57 shows two different points selected on the same curves and the resulting bridge curve.



**Figure 2-56** Bridge curve created between two points selected on the two curves



**Figure 2-57** Bridge curve created between two different points selected on the same curves

## DELETING SKETCHED ENTITIES

To delete a sketched entity, first ensure that no drawing tool is active. If any of them is active, press the ESC key for deactivating. Now, select the entity you want to delete using the left mouse button and then right-click to display the Marking Menu. Choose the **Delete** option from this Marking Menu. You can also press the DELETE key to delete the selected entities. To delete more than one entity, you can use a window or a crossing as discussed next.

### Deleting Entities by Using a Window

A window is defined as a box created by pressing and holding the left mouse button and dragging the cursor from the left to the right in the drawing window. The window has a property that all the entities that lie completely inside the window will be selected. The box defined by the window consists of continuous lines. All the selected entities will be displayed in cyan color. After selecting the entities, right-click and choose **Delete** from the Marking menu or press the DELETE key to delete all the selected entities.

### Deleting Entities by Using a Crossing

A crossing is defined as a box created by pressing and holding down the left mouse button and dragging the cursor from the right to the left in the drawing window. The crossing has a property that all entities that lie completely or partially inside the crossing or the entities that touch the crossing will be selected. The box defined by the crossing consists of dashed lines. Once the entities are selected, right-click and choose **Delete** from the Marking menu.



**Tip.** You can add or remove an entity from the selection set by pressing the **SHIFT** or the **CTRL** key and then selecting the entity by using the left mouse button. If the entity is already in the current selection set, it will be removed from the selection set. If not, it will be added to set.

## FINISHING A SKETCH

After creating the required sketch, you need to save it. But before you save the sketch, you need to finish the sketch and come out of the sketching environment. To do so, choose the **Finish Sketch** tool from the **Exit** panel of the **Sketch** tab; the sketch will be finished and you will switch to the **Home** view. You can also exit the sketching environment by choosing the **Finish 2D Sketch** option from the Marking menu. The **Home** view enables you to view and create the modeling features with ease. After switching to the **Modeling** environment, you can save the document.

## UNDERSTANDING THE DRAWING DISPLAY TOOLS

The drawing display tools or navigation tools are an integral part of any design software. These tools are extensively used during the design process. These tools are available in the **Navigation** Bar located on the right in the graphics window and in the **Navigate** panel of the **View** tab. Some of the drawing display tools in Autodesk Inventor are discussed next. The rest of these tools will be discussed in the later chapters.

### Zoom All

**Ribbon:** View > Navigate > Zoom drop-down > Zoom All  
**Navigation Bar:** Zoom flyout > Zoom All



The **Zoom All** tool is used to increase the drawing display area to display all the sketched entities in the current display.

### Zoom

**Ribbon:** View > Navigate > Zoom drop-down > Zoom  
**Navigation Bar:** Zoom flyout > Zoom



The **Zoom** tool is used to interactively zoom in and out of the drawing view. When you choose this tool, the default cursor is replaced by the zoom cursor. You can zoom in the drawing by pressing the left mouse button and dragging the cursor down. Similarly, you can zoom out the drawing by pressing the left mouse button and then dragging the cursor up. You can exit this tool by choosing another tool or by pressing ESC. You can also choose **Done [Esc]** from the Marking menu, which is displayed on right-clicking. You can also zoom in the drawing by rolling the scroll wheel of the mouse in the downward direction. Similarly, you can zoom out the drawing by rolling the scroll wheel in the upward direction.



**Tip.** If you need to increase the drawing display area by zooming out the drawing by using the **Zoom** tool after increasing the grid spacing.



## Zoom Window

**Ribbon:** View > Navigate > Zoom drop-down > Zoom Window  
**Navigation Bar:** Zoom flyout > Zoom Window



The **Zoom Window** tool is used to define an area to be magnified and viewed in the current drawing. The area is defined using two diagonal points of a box (called window) in the drawing window. The area inscribed in the window will be magnified and displayed on the screen.



**Tip.** 1. The size of the dimension text always remains constant even if you magnify the area that includes some dimensions.

2. To switch to the previous view, right-click in the drawing window and then choose **Previous View** from the shortcut menu or press the **F5** key. You can restore nine previous views in the current sketching environment by using this option.

## Zoom Selected

**Ribbon:** View > Navigate > Zoom drop-down > Zoom Selected  
**Navigation Bar:** Zoom flyout > Zoom Selected



When you choose the **Zoom Selected** tool, you will be prompted to select an entity to zoom. Select an entity from the drawing area; it will magnify to the maximum extent and placed at the center of the drawing window. This tool can also be invoked by pressing the END key.

## Pan

**Ribbon:** View > Navigate > Pan  
**Navigation Bar:** Pan



The **Pan** tool is used to drag the current view in the drawing window. This option is generally used to display the contents of the drawing that are outside the display area, without actually changing the magnification of the current drawing. It is similar to holding the drawing and dragging it across the drawing window. You can also invoke the **Pan** tool by pressing and holding the middle scroll wheel of the mouse.

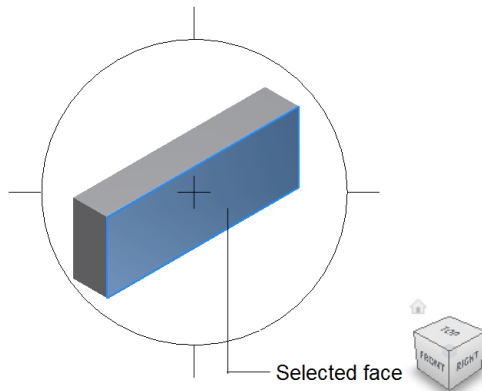
## Orbit

**Ribbon:** View > Navigate > Orbit drop-down > Orbit  
**Navigation Bar:** Orbit flyout > Orbit

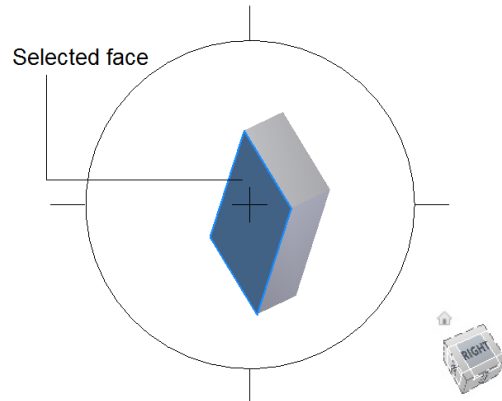


The **Orbit** tool is used to rotate a model freely about any axis. It is useful when you want to rotate a model to any position. It is a transparent tool as it can be invoked inside any other command. You can invoke this tool by choosing the **Orbit** tool from the **Navigate** panel in the **View** tab. On doing so, an arcball will be displayed. This arcball is a circle with four small lines placed such that they divide the arcball into quadrants. The orbit axis is parallel to the screen and if you rotate an object by dragging the mouse pointer outside

the arcball, the object will rotate about the orbit axis. Figure 2-58 shows the model to be rotated and Figure 2-59 shows the same model rotated about the vertical axis by using the **Orbit** tool.



**Figure 2-58** Position 1: Default view of the model



**Figure 2-59** Position 2: Model rotated about the vertical axis



#### Note

While working with the **Orbit Tool** the viewport adjusts for better visibility and understanding.

## Constrained Orbit

**Ribbon:** View > Navigate > Orbit drop-down > Constrained Orbit  
**Navigation Bar:** Orbit flyout > Constrained Orbit

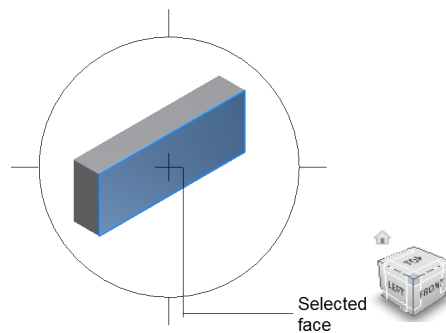


The **Constrained Orbit** tool is used to visually maneuver around the 3D objects to obtain different views. This is one of the most important tool used for advanced 3D viewing. Figures 2-60 and 2-61 show the default view of the model, and the view after one complete rotation, respectively. When the **Constrained Orbit** tool is invoked, the cursor changes and looks like a sphere encircled by two arc-shaped arrows. This cursor is known as the Orbit mode cursor. You can click and drag the mouse to rotate the model freely. You can move the Orbit mode cursor horizontally, vertically, and diagonally. In this case, the axis is normal to the top and bottom faces of the ViewCube. This is also a transparent tool as it can be invoked inside any other tool.

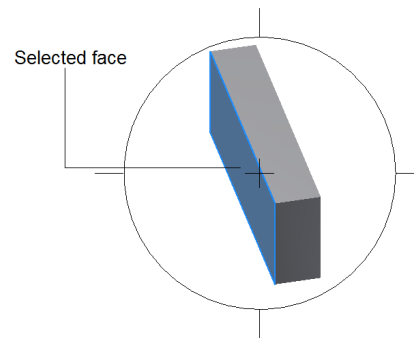


**Tip.** 1. Press and hold the **SHIFT** key and the middle mouse button to temporarily enter the **Constrained Orbit** mode.

2. Move the mouse cursor toward the center of the orbit circle; the cursor changes to the **Orbit** mode. Next, click the left mouse button and drag; the model will move freely about any axis.



**Figure 2-60** Position 1: Default view of the model



**Figure 2-61** Position 2: Model after a complete rotation

## TUTORIALS

Although Autodesk Inventor is parametric in nature yet in this chapter you will use the **Inventor Precise Input** toolbar and the Dynamic Input method to draw objects. This is to ensure that you are comfortable while using various drawing options in Autodesk Inventor. In the later chapters, you will use the parametric feature of Autodesk Inventor to size or draw the entities as per the desired dimension values.

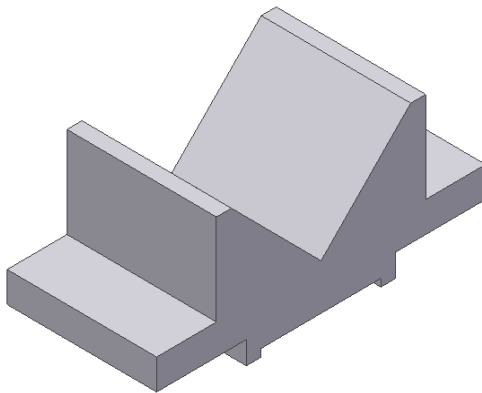


### Note

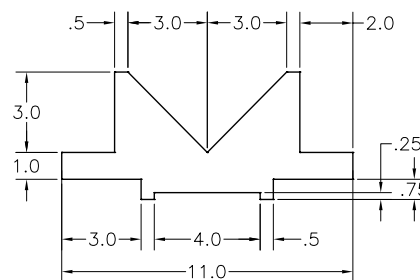
You can also choose the required tools from the Status Bar which displayed by default at the bottom of the graphics window.

## Tutorial 1

In this tutorial, you will draw the sketch of the model shown in Figure 2-62. The sketch to be drawn is shown in Figure 2-63. Do not dimension it, as the dimensions are given only for reference. **(Expected time: 30 min)**



**Figure 2-62** Model for Tutorial 1



**Figure 2-63** Sketch of the model

The following steps are required to complete this tutorial:

- a. Start a new Autodesk Inventor session and then start a new metric part file.
- b. Invoke the **Line** tool and draw the sketch by specifying the coordinates of the points in the Dynamic Input.
- c. Save the sketch with the name *Tutorial1* and close the file.

## Starting Autodesk Inventor

1. Start Autodesk Inventor by double-clicking on its shortcut icon on the desktop of your computer; a new session of Autodesk Inventor is started.
2. Choose the **New** tool from the **Launch** panel of the **Ribbon**; the **Create New File** dialog box is displayed.
3. Choose **Metric** and then double-click on the **Standard (mm).ipt** icon to start a standard metric template; a new metric standard part file starts.
4. Choose the **Start 2D Sketch** button from the **Sketch** panel of the **3D Model** tab; the default planes are displayed and you are prompted to select the sketching plane.
5. Choose the **Home** button from the ViewCube; the current orientation of the sketch plane is changed.
6. Now, select the **YZ** plane as the sketching plane from the graphics window; the Sketching environment is invoked and the **YZ** plane becomes parallel to the screen.



### Note

1. If by default, the Grid lines are not displayed in the Sketching environment, choose the **Application Options** button from the **Options** panel of the **Tools** tab; the **Application Options** dialog box will be invoked. Now, select the **Grid lines** check box from the **Display** area of the **Sketch** tab.

2. For the purpose of accuracy, Grid lines are kept ON in all tutorials.

## Drawing the Sketch

As mentioned earlier, Autodesk Inventor is parametric in nature. Therefore, you can draw the sketch from any point in the drawing window. In this tutorial, Dynamic Input has been used to enter dimensions while drawing the sketch.

1. Choose the **Line** tool from the **Create** panel in the **Sketch** tab. Alternatively, choose the **Create Line** tool from the Marking Menu that is displayed on right-clicking in the drawing / Graphics window. On doing so, you are prompted to select the first point for the line. Next, choose **Precise Input** from the expanded **Create** panel of the **Sketch** tab; the **Inventor Precise Input** toolbar is displayed. Double-click on the title bar of this toolbar to dock it. If required, you can also leave this toolbar floating on the screen.

Initially, the **Precise Input** button is not enabled. This button is enabled only when you invoke a sketching tool. Since all initial settings are configured, you can now start drawing the sketch.


When you invoke the **Line** tool, the cursor is replaced by the drawing cursor that has a yellow circle at the intersection of crosshairs. When you move the crosshair in the drawing window, this circle snaps to the point that is closer to it. Also, coordinates of the current location of the cursor are displayed at the status bar.

2. To specify the first point, enter **0** in both the **X** and **Y** edit boxes of the **Inventor Precise Input** toolbar and then press ENTER; you are prompted to specify the endpoint of the line.
3. In the **Inventor Precise Input** toolbar, enter **-3** and **3** in the **X** and **Y** edit boxes, respectively. Next, press ENTER to define the endpoint of the line. On doing so, the first line of the sketch is drawn and you are prompted to select the endpoint of the line.

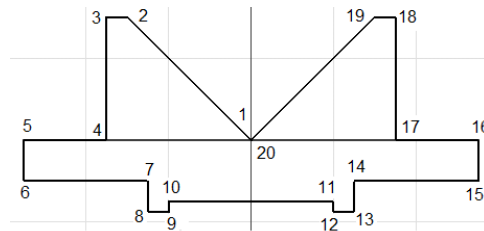
You will notice that the dimensions of the sketch are very small but the drawing display area is large. Therefore, you need to modify the drawing display area by using the drawing display tools. To do so, you can use the **Zoom** tool.



**Tip.** You can use the **TAB** key to switch from the **X** edit box to the **Y** edit box and vice versa in the **Inventor Precise Input** toolbar.

4. Choose the **Zoom** tool from the **Navigation Bar**; the drawing cursor is changed to an arrow cursor. 
5. Move the cursor to the top of the drawing window, press and hold the left mouse button and then drag the cursor downward. Stop dragging the cursor once you notice that the display is adjusted.
6. Right-click to display the shortcut menu, and then choose **Done** to exit the **Zoom** tool.
7. Again, right-click in the graphics window and then choose **Cancel (ESC)** from the Marking Menu to exit the **Line** tool. Also, close the **Inventor Precise Input** toolbar.
8. Invoke the **Line** tool again. From this step onward, you will use the Dynamic Input to create lines in this tutorial. Select the end point of the first line that was created with the help of the **Inventor Precise Input** toolbar. Move the cursor toward left, and enter **0.5** in the length input field and **180** in the angle input field and then press ENTER. Use the **TAB** key to toggle between the input fields.
9. Now, you need to create the third line between points 3 and 4, refer to Figure 2-64. To do so, move the cursor downward in the graphics window. Enter **3** in the length input field, press **TAB** to switch to the angle input field, and enter **90** and then press ENTER; a line is created between the points 3 and 4.

10. Move the cursor toward left in the graphics window. Enter **2** in the length input field, press TAB to switch to the angle input field, and enter **90** in it, and then press ENTER; a line is created between points 4 and 5, refer to Figure 2-64.
11. Move the cursor downward in the graphics window. Enter **1** in the length input field, press TAB, and enter **90** in the angle input field and then press ENTER; a line is created between points 5 and 6, refer to Figure 2-64.



*Figure 2-64 Sketch for Tutorial 1*

12. Move the cursor toward right in the graphics window. Enter **3** in the length input field, press TAB, and enter **90** in the angle input field and then press ENTER; a line is created between points 6 and 7.
13. Move the cursor downward in the graphics window. Enter **0.75** in the length input field, press TAB, and enter **90** in the angle input field and then press ENTER; a line is created between points 7 and 8, refer to Figure 2-64.
14. Move the cursor toward right in the graphics window. Enter **0.5** in the length input field, press TAB, and enter **90** in the angle input field and then press ENTER; a line is created between points 8 and 9, refer to Figure 2-64.
15. Move the cursor upward in the graphics window. Enter **0.25** in the length input field, press TAB, and enter **90** in the angle input field and then press ENTER; a line is created between points 9 and 10, refer to Figure 2-64.
16. Move the cursor toward right in the graphics window. Enter **4** in the length input field, press TAB, and enter **90** in the angle input field and then press ENTER; a line is created between points 10 and 11, refer to Figure 2-64.
17. Move the cursor downward in the graphics window. Enter **0.25** in the length input field, press TAB, and enter **90** in the angle input field and then press ENTER; a line is created between points 11 and 12, refer to Figure 2-64.
18. Move the cursor toward right in the graphics window. Enter **0.5** in the length input field, press TAB and enter **90** in the angle input field and then press ENTER; a line connecting points 12 and 13 is created, refer to Figure 2-64.
19. Move the cursor upward in the graphics window. Enter **0.75** in the length input field,

- press TAB, and enter **90** in the angle input field and then press ENTER; a line connecting points 13 and 14 is created, refer to Figure 2-64.
20. Move the cursor toward right in the graphics window. Enter **3** in the length input field and **90** in the angle input field and then press ENTER; a line connecting points 14 and 15 is created, refer to Figure 2-64.
  21. Move the cursor upward in the graphics window. Enter **1** in the length input field, press TAB, and enter **90** in the angle input field and then press ENTER; a line connecting points 15 and 16 is created, refer to Figure 2-64.
  22. Move the cursor toward left in the graphics window. Enter **2** in the length input field, press TAB, and enter **90** in the angle input field and then press ENTER; a line connecting points 16 and 17 is created, refer to Figure 2-64.
  23. Move the cursor upward in the graphics window. Enter **3** in the length input field, press TAB, and enter **90** in the angle input field and then press ENTER; a line connecting points 17 and 18 is created, refer to Figure 2-64.
  24. Move the cursor toward left in the graphics window. Enter **0.5** in the length input field, press TAB, and enter **90** in the angle input field and then press ENTER; a line connecting points 18 and 19 is created, refer to Figure 2-64.
  25. Now, to close the geometry, click on the point 1 that you created with the help of the **Inventor Precise Input** toolbar.
  26. Next, right-click in the Graphics window and choose **Cancel (ESC)** from the Marking menu displayed to exit the **Line** tool.

**Note**

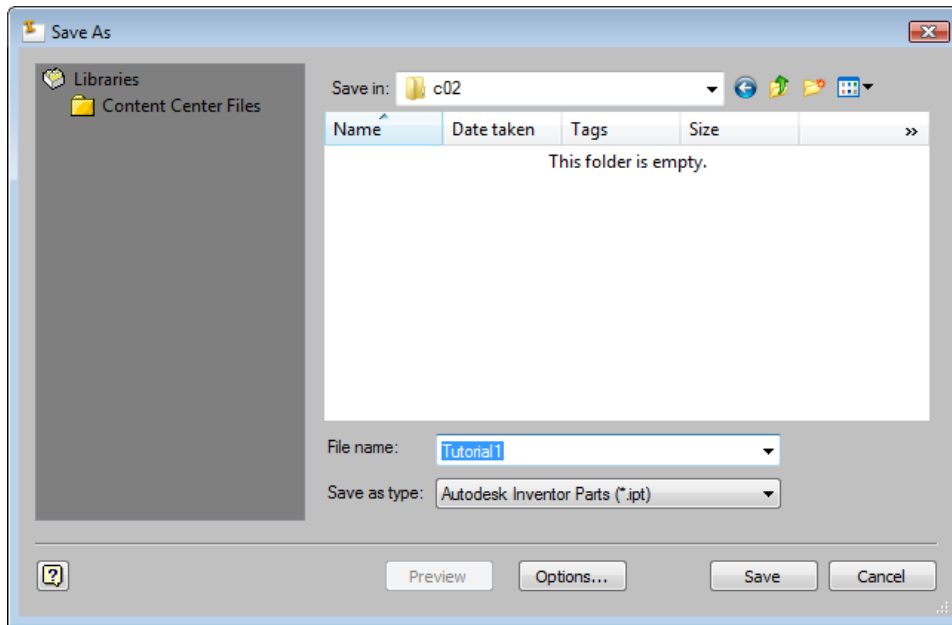
*The method of applying additional constraints and using them to fully constrain the sketch will be discussed in Chapter 3.*

**Saving the Sketch**

Remember that you cannot save a sketch in the Sketching environment. This is because the Sketching environment is just a part of the **Part** module in Autodesk Inventor. This environment is used only for drawing the sketches of features. Therefore, you need to exit the Sketching environment to save the sketch for further use. The sketches in the **Part** module are saved in the *.ipt* format.

1. Right-click in the graphics window and then choose the **Finish 2D Sketch** button from the Marking Menu displayed; the Sketching environment is closed and you switch to the Part modeling environment. Now, choose the **Home** button of the ViewCube; the current orientation of the sketch is changed to Isometric. Also, notice that the **3D Model** tab is activated in place of the **Sketch** tab. The options in the **3D Model** tab are used to create features. The options under this tab will be discussed in later chapters.

2. Choose **Save** from **Quick Access Toolbar**; the **Save As** dialog box is displayed.
3. Create a new folder with the name *Inventor\_2015* in the C drive of your computer. In this folder, create another folder with the name *c02*.
4. Enter **Tutorial1** as the file name in the **File name** edit box, refer to Figure 2-65, and then choose the **Save** button from the **Save As** dialog box to save the sketch.



*Figure 2-65 The Save As dialog box*

5. Choose **Close > Close** from the **Application Menu** to close this file.

## Tutorial 2

In this tutorial, you will draw the sketch for the model shown in Figure 2-66. The sketch to be drawn is shown in Figure 2-67. Do not dimension it, as the dimensions are given only for reference.  
(Expected time: 30 min)



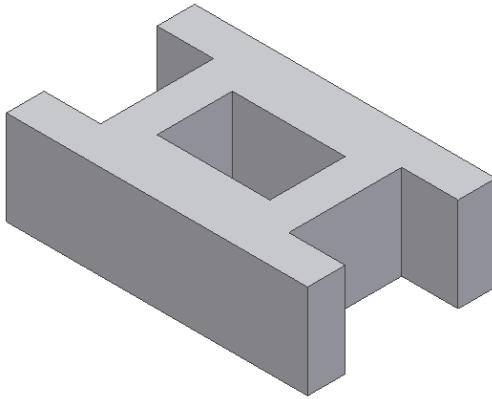


Figure 2-66 Model for Tutorial 2

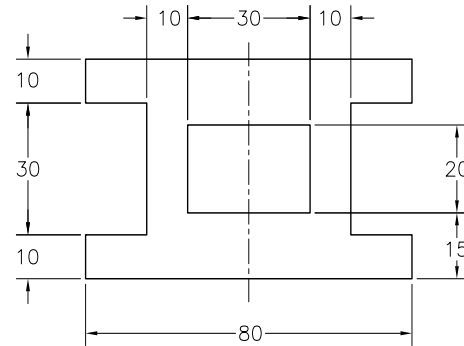


Figure 2-67 Dimensioned sketch for Tutorial 2

The following steps are required to complete this tutorial:

- Start a new metric standard part file.
- Draw the outer loop by specifying the length and angle lines by using the Dynamic Input method, refer to Figure 2-68.
- Draw the inner closed loop by using the Dynamic Input method, refer to Figure 2-69.
- Save the sketch with the name *Tutorial2.ipt* and close the file.


### Starting a New File

- Choose the **New** tool from the **Launch** panel of the **Get Started** tab; the **Create New File** dialog box is displayed. In this dialog box, choose **Metric**, and then double-click on the **Standard (mm).ipt** icon to start a standard metric template.

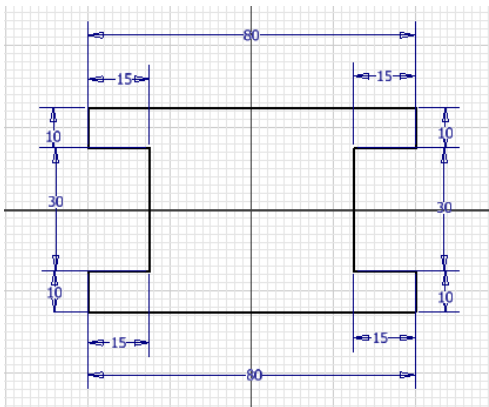
### Drawing the Sketch

As evident from Figure 2-66, the sketch consists of two nested loops: inner loop and outer loop. While extruding a nested loop, the inner loop can be subtracted from the outer loop. In this way, a cavity will be created automatically in the model when you extrude the sketch. This reduces the time and effort required in creating the inner cavity as another feature. Therefore, you can draw both the loops together for this tutorial.

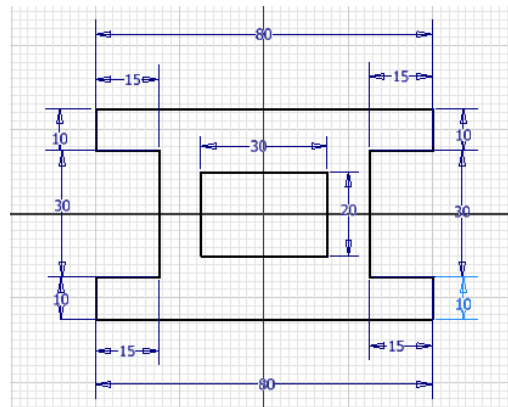
- Choose the **Start 2D Sketch** button from the **Sketch** panel of the **3D Model** tab; the default planes are displayed and you are prompted to select the sketching plane.
- Choose the **Home** button of the ViewCube; the current orientation of the sketch plane is changed.
- Now, select the **XY** plane as the sketching plane from the graphics window; the Sketching environment is invoked and the **XY** plane becomes parallel to the screen.

4. Choose the **Line** tool from the **Create** panel. Next, move the cursor and click when the cursor displays **-40** and **-25** in the Pointer Input or press the TAB key and then enter the X and Y coordinate values in the Pointer Input. As you specify the first point, you are prompted to specify the endpoint of the line and the Pointer Input is changed to Dimension Input. 
5. Enter **80** in the length input field of the Dimension Input and press the TAB key; the angle input field becomes active. Enter **0** and then press ENTER; the first line is created and the Dimension Input is displayed again.
6. Move the cursor up and then enter **10** in the length input field of the Dimension Input. Next, press the TAB key and enter **90** in the angle input field and then press ENTER; the second line is created and the Dimension Input is displayed again.
7. Move the cursor toward the left and then enter **15** in the length input field. Next, press the TAB key and enter **90** in the angle input field. Next, press ENTER; the third line is created and the Dimension Input is displayed again.
8. Move the cursor up and then enter **30** in the length input field. Next, press the TAB key and enter **90** in the angle input field. Next, press ENTER; the fourth line is created and the Dimension Input is displayed again.
9. Move the cursor toward the right and then enter **15** in the length input field. Next, press the TAB key and enter **90** in the angle input field. Next, press ENTER; the fifth line is created and the Dimension Input is displayed again.
10. Move the cursor up and then enter **10** in the length input field. Next, press the TAB key and enter **90** in the angle input field. Next, press ENTER; the sixth line is created and the Dimension Input is displayed again.
11. Move the cursor toward the left and then enter **80** in the length input field. Next, press the TAB key and enter **90** in the angle input field. Next, press ENTER; the seventh line is created and the Dimension Input is displayed again.
12. Move the cursor down and then enter **10** in the length input field. Next, press the TAB key and enter **90** in the angle input field. Next, press ENTER; the eighth line is created and the Dimension Input is displayed again.
13. Move the cursor toward the right and then enter **15** in the length input field. Next, press the TAB key and enter **90** in the angle input field. Next, press ENTER; the ninth line is created and the Dimension Input is displayed again.
14. Move the cursor down and then enter **30** in the length input field. Next, press the TAB key and enter **90** in the angle input field. Next, press ENTER; the tenth line is created and the Dimension Input is displayed again.
15. Move the cursor toward the left and then enter **15** in the length input field. Next, press

- the TAB key and enter **90** in the angle input field. Next, press ENTER; the eleventh line is created and the Dimension Input is displayed again.
16. Move the cursor down and then enter **10** in the length input field. Next, press the TAB key and enter **90** in the angle input field. Next, press ENTER; the twelfth line is created and the Dimension Input is displayed again.
  17. Right-click to display the Marking Menu and choose **OK** from it to exit the **Line** tool. The sketch of the outer loop is shown in Figure 2-68. You need to arrange the positions of dimensions in the sketch by dragging them to view the sketch clearly.
- Next, you need to draw the inner loop. You can draw the loop by using the **Two Point Rectangle** tool.
18. Choose the **Rectangle Two Point** tool from the **Sketch > Create > Rectangle/Slot** drop-down; you are prompted to specify the first corner of the rectangle.
  19. Press the TAB key and then enter **-15** and **-10** in the Pointer Input. Alternatively, move the cursor and click when the cursor displays **-15** and **-10** in the Pointer Input. As you click to specify the first corner, you are prompted to specify the opposite corner of the rectangle and the Pointer Input is changed to Dimension Input.
  20. Move the cursor diagonally upward in the right direction and enter **30** and **20** in the horizontal and vertical input fields of the Dimension Input, respectively, and then press ENTER.
  21. Next, right-click on the graphics window; a Marking Menu is displayed. Choose **Cancel (ESC)** from the Marking Menu; the sketch is created, as shown in Figure 2-69.



*Figure 2-68 Sketch of the outer loop*



*Figure 2-69 Completed sketch for Tutorial 2*

**Note**

The angular dimensions have not been shown in Figures 2-68 and 2-69 for clarity of sketches. You can control the display of the linear and angular dimensions of the sketch. To do so, choose **Application Options** from the **Options** panel of the **Tools** tab; the **Application Options** dialog box is displayed. In the **Sketch** tab of the **Application Options** dialog box, choose the **Settings** button; the **Constraint Settings** dialog box is displayed. Clear the **Create dimensions from input values** check box in the **Dimensions** area of the **Constraint Settings** dialog box and then choose **OK**. Next, choose the **Apply** and **Close** buttons from the **Application Options** dialog box to turn off applying dimensions automatically during sketching.

**Saving the Sketch**

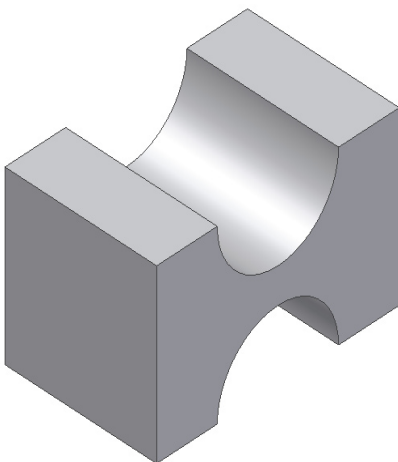
Next, you need to save the sketch. As mentioned earlier, you cannot save the sketch in the sketching environment. First, you need to exit the Sketching environment and then save it.

1. Choose the **Finish Sketch** button from the **Exit** panel; the Sketching environment is closed and you will switch to the **Home** view of the part modeling environment.
2. Choose the **Save** tool and save the sketch with the name *Tutorial2* at the location given below:  
C:\Inventor\_2015\c02
3. Choose **Close > Close** from the **Application Menu** to close this file.

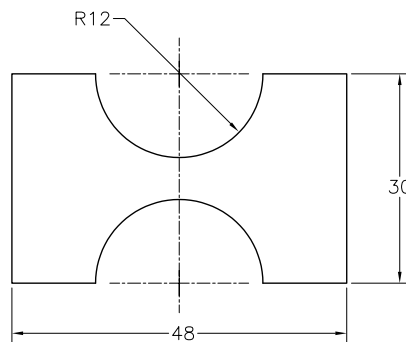
**Tutorial 3**

In this tutorial, you will draw the sketch for the model shown in Figure 2-70. The sketch of the model is shown in Figure 2-71. Do not dimension the sketch as the dimensions are given only for reference.

**(Expected time: 30 min)**



**Figure 2-70** Model for Tutorial 3



**Figure 2-71** Sketch for Tutorial 3

The following steps are required to complete this tutorial:

- a. Start a new metric standard part file.
- b. Draw the sketch by using the **Arc** and **Line** tools, refer to Figure 2-71.
- c. Save the sketch with the name *Tutorial3* and close the file.

### Starting a New File

1. Choose the **New** tool from the **Launch** panel of the **Get Started** tab to invoke the **Create New File** dialog box.
2. Start a new metric standard part file by double-clicking on **Standard (mm).ipt** in the **Metric**.
3. Choose the **Start 2D Sketch** button from the **Sketch** panel of the **3D Model** tab; the default planes are displayed and you are prompted to select the sketching plane.
4. Choose the **Home** button from the ViewCube; the current orientation of the sketch plane is changed.
5. Now, select the **YZ** plane as the sketching plane from the Graphics window; the Sketching environment is invoked and the **YZ** Plane becomes parallel to the screen.

### Drawing the Sketch

The upper arc of the sketch can be drawn by specifying its center, start, and endpoint. Therefore, you need to use the **Center Point Arc** tool to draw it.

1. Choose the **Center Point Arc** tool from the **Sketch > Create > Arc** drop-down; you are prompted to specify the center of the arc.
2. Press the TAB key and enter **0** in the X coordinate edit field of the Dynamic Input. Again, press TAB and enter **15** in the Y coordinate edit field. Next, press ENTER to specify the center of the arc; the center of the arc is created and you are prompted to specify the start point of the arc.
3. Enter **12** in the length input field. Next, press TAB and enter **180** in the angle input field of the Dynamic Input and press ENTER.

The first point on the arc is defined. Now, you need to specify the endpoint of the arc.

4. As you are trying to draw the upper arc, you need to move the mouse cursor in the counter-clockwise direction and enter **180** in the angle input field and press ENTER. The upper arc is drawn.

Next, you need to draw lines in the sketch.

5. Choose the **Line** tool from the **Create** panel; you are prompted to specify the start point of the line.

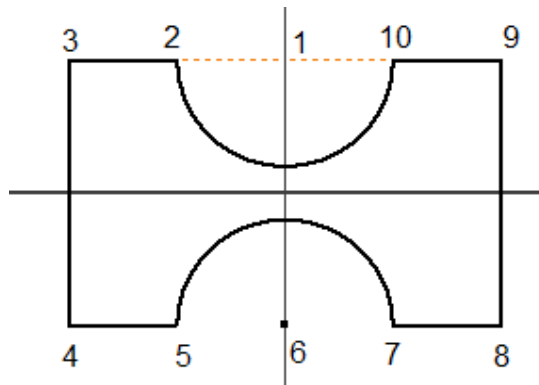


**Evaluation Copy. Do not reproduce. For information visit [www.cadcim.com](http://www.cadcim.com)**

6. Move the cursor close to the start point of the arc; the yellow circle snaps to the endpoint of the arc and turns green. The change in the color of the circle indicates that the cursor has snapped to the endpoint of the arc. Press the left mouse button to select this point as the start point of the line.
7. Move the cursor toward left in the graphics window. Enter **12** in the length input field, press the TAB key, and then enter **180** in the angle input field in the Dynamic Input; the line between points 2 and 3 is created. Refer to Figure 2-72 for point numbers.
8. Move the cursor downward in the graphics window. Enter **30** in the length input field and **90** in the angle input field in the Dynamic Input; a line between points 3 and 4 is created.
9. Move the cursor toward right in the graphics window. Enter **12** in the length input field and **90** in the angle input field of the Dynamic Input; a line is created between points 4 and 5.

Now, you need to draw the lower arc of the sketch. You can use the **Line** tool to draw the arc.

10. Move the cursor close to the endpoint of the last line until the yellow circle snaps to that point. When the yellow circle snaps to the endpoint, it turns gray. Now, press and hold the left mouse button and drag the mouse through a small distance in the upward direction. On doing so, four imaginary lines are displayed, showing the four directions in which you can draw the arc.



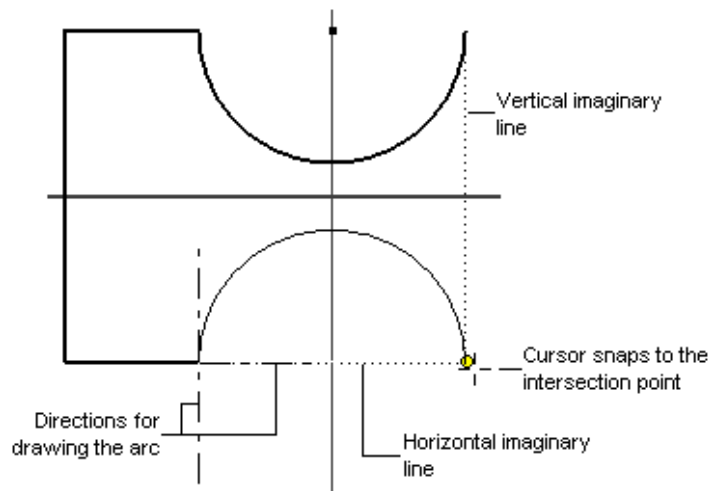
**Figure 2-72** Sketch showing different points for Tutorial 3

11. As you need to draw the arc normal to the line, drag the cursor vertically upward along the vertical imaginary line to a small distance and then drag the cursor close to the right endpoint of the upper arc; the cursor snaps to the endpoint of the arc and turns green.
12. Move the cursor downward, you will notice a point where both the vertical and horizontal imaginary lines intersect each other, see Figure 2-72. This point is the endpoint of the lower arc. The cursor automatically snaps to that point. Do not release the left mouse button until the entire process is completed.
13. When the cursor snaps to the intersection of the imaginary lines, release the mouse button to complete the lower arc.

**Note**

1. In Figure 2-72, the major and minor grid lines, and the triad have not been displayed for a better display of the sketch and the imaginary lines.

2. While using the temporary tracking option to draw lines, you do not need to press and hold the left mouse button and drag it. You just need to click once to select the endpoint of the line after you get the intersection point of the imaginary lines, refer to Figure 2-73.



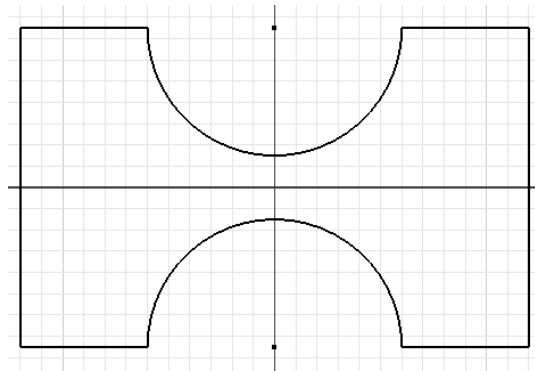
**Figure 2-73** Use of the temporary tracking option to draw an arc

Next, you need to draw the remaining lines to complete the sketch.

14. Move the cursor toward right in the graphics window. Enter **12** in the length input field and **0** in the angle input field in the Dynamic Input; a line between points 7 and 8 is created.
15. Move the cursor upward in the graphics window. Enter **30** in the length input field and **90** in the angle input field in the Dynamic Input; a line between points 8 and 9 is created.

16. Move the cursor toward left in the graphics window. Enter **12** in the length input field and **90** in the angle input field in the Dynamic Input; a line between points 9 and 10 is created.
17. Exit the **Line** tool.

The final sketch for Tutorial 3 is shown in Figure 2-74.



*Figure 2-74 Final sketch for Tutorial 3*



#### Note

*In Figure 2-74, the automatic applied dimensions have not been shown for clarity of sketches.*

### Saving the Sketch

1. As it is not possible to save the file in the Sketching environment, therefore you need to exit the Sketching environment and then save the file. To do so, right-click anywhere in the graphics window; the Marking Menu will be displayed. Choose the **Finish 2D Sketch** option from the Marking menu; the Sketching environment is closed and you switch to the part modeling environment. Now, choose the **Home** button of ViewCube; the current orientation of the sketch is changed to Isometric.
2. Choose the **Save** button from **Quick Access Toolbar** and save this sketch with the name *Tutorial4* at the location given below.  
  
*C:\Inventor\_2015\c02*
3. Choose **Close > Close** from the **Application Menu** to close this file.



## Tutorial 4

In this tutorial, you will draw the basic sketch of the revolved solid model shown in Figure 2-75. The sketch for creating this model is shown in Figure 2-76. Do not dimension the sketch as the dimensions are given only for reference. Use Dynamic Input to draw the feature.

(Expected time: 30 min)

The following steps are required to complete this tutorial:

- Start a new metric standard part file.
- Invoke the **Line** tool and draw the sketch with the help of Dynamic Input.
- Save the sketch with the name *Tutorial4* and close the file.
- Draw fillets

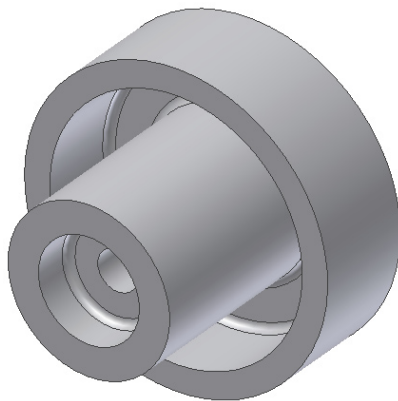


Figure 2-75 Revolved model for Tutorial 4

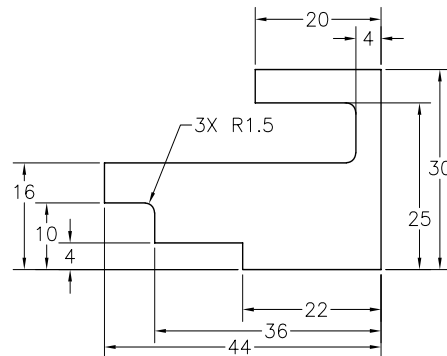
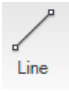


Figure 2-76 Sketch for the revolved model

### Starting a New File

- Choose the **New** tool from the **Launch** panel of the **Get Started** tab to invoke the **Create New File** dialog box.
- Choose **Metric** to display the standard metric templates. Double-click on **Standard (mm).ipt** to start a new metric part file.
- Choose the **Start 2D Sketch** button from the **Sketch** panel of the **3D Model** tab; the default planes are displayed and you are prompted to select the sketching plane.
- Choose the **Home** button from the ViewCube; the current orientation of the sketch plane is changed.
- Now, select the **YZ** plane as the sketching plane from the graphics window; the Sketching environment is invoked and the **YZ** Plane becomes parallel to the screen.

## Drawing the Sketch

1. Choose the **Line** tool from the **Create** panel in the **Sketch** tab or from the Marking Menu. On doing so, you are prompted to select the first point of the line to be created. In the Dynamic Input, press TAB and enter **0** in the X co-ordinate field. Next, press TAB, and enter **0** in the Y coordinate field and press ENTER.
- 
2. Now, you need to draw the line 1. Move the cursor toward left, enter **22** in the length input field, and enter **180** in the angle input field of the Dynamic Input; the line 1 is drawn.
  3. Move the cursor upward in the graphics window. Next, enter **4** in the length input field, press TAB, and enter **90** in the angle input field; the line 2 is drawn, as shown in Figure 2-77.
  4. Move the cursor toward left in the Graphics window. Next, enter **14** in the length input field, press TAB, and enter **90** in the angle input field in the Dynamic Input; line 3 is drawn.
  5. Move the cursor upward in the graphics window. Next, enter **6** in the length input field, press TAB, and enter **90** in the angle input field in the Dynamic Input; line 4 is drawn.
  6. Move the cursor toward the left in the graphics window. Next, enter **8** in the length input field, press TAB, and enter **90** in the angle input field in the Dynamic Input; line 5 is drawn.
  7. Move the cursor upward in the graphics window. Next, enter **6** in the length input field, press TAB, and enter **90** in the angle input field in the Dynamic Input; line 6 is drawn.
  8. Move the cursor toward the right in the graphics window. Next, enter **40** in the length input field, press TAB, and enter **90** in the angle input field; line 7 is drawn.
  9. Move the cursor upward in the graphics window. Next, enter **9** in the length input field, press TAB, and enter **90** in the angle input field; line 8 is drawn.
  10. Move the cursor toward left in the graphics window. Next, enter **16** in the length input field, press TAB, and enter **90** in the angle input field; line 9 is drawn.
  11. Move the cursor upward in the graphics window. Next, enter **5** in the length input field, press TAB, and then enter **90** in the angle input field; line 10 is drawn.
  12. Move the cursor toward the right in the graphics window. Next, enter **20** in the length input field, press TAB, and enter **90** in the angle input field; line 11 is drawn.
  13. Move the cursor downward in the graphics window. Next, enter **30** in the length input field and **90** in the angle input field; line 12 is drawn.
  14. The initial sketch is drawn. Exit the **Line** tool by choosing **OK** from the Marking menu.

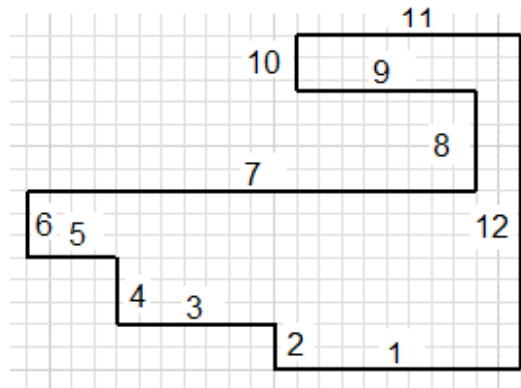


Figure 2-77 Sketch after drawing the lines

### Drawing Fillets

1. Choose the **Fillet** tool from the **Sketch > Create > Fillet/Chamfer** drop-down; the **2D Fillet** dialog box is displayed with a default value of the fillet radius. Enter **1.5** in the **Radius** edit box of this dialog box. Do not press ENTER.
2. Select the line 8 and then line 9, refer to Figure 2-76; a fillet is created between these lines and the radius of the fillet is displayed in the sketch.
3. Similarly, select lines 7 and 8 and then lines 4 and 5 to create a fillet between these lines. Next, right-click, and choose **OK** from the Marking Menu to exit the **Fillet** tool after creating all fillets.



As all lines are filleted with the same radius value, the radius of the fillet is not displayed on other fillets. This completes the sketch. The final sketch for this tutorial after filleting all sketches is shown in Figure 2-78.

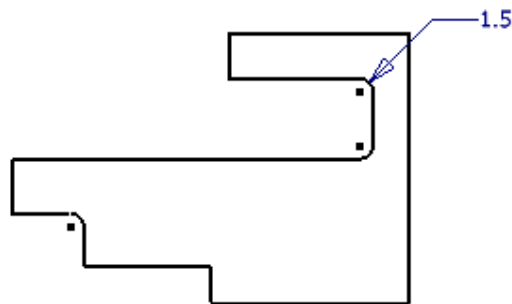


Figure 2-78 Final sketch after filleting

**Note**

*In Figure 2-78, the display of axes and grids have been turned off for a better visibility of the lines of the sketch.*

**Saving the Sketch**

1. Choose the **Finish 2D Sketch** button from the Marking Menu.
2. Choose the **Save** button from **Quick Access Toolbar** and save this sketch with the name *Tutorial4* at the location given below.  
*C:\Inventor\_2015\c02*
3. Choose **Close > Close** from the **Application Menu** to close this file.

---

**Self-Evaluation Test**

**Answer the following questions and then compare them to those given at the end of this chapter:**

1. Most of the designs created in Autodesk Inventor are a combination of sketched features and placed features. (T/F)
2. Whenever you start a new file in the **Part** module, the Sketching environment is invoked by default. (T/F)
3. You cannot turn off the display of grid lines. (T/F)
4. You cannot draw an arc while the **Line** tool is active. (T/F)
5. In Autodesk Inventor, the two types of sketching entities that can be drawn are \_\_\_\_\_ and \_\_\_\_\_.
6. In the Sketching environment, the \_\_\_\_\_ tool is used to place a sketch point or a center point.
7. Filleting is defined as the process of \_\_\_\_\_ the sharp corners and sharp edges of models.
8. You can toggle between the length and angle input fields by using the \_\_\_\_\_ key.
9. You can use the \_\_\_\_\_ toolbar to precisely enter coordinates of the points in the graphics window.
10. You can also delete the sketched entities by pressing the \_\_\_\_\_ key.
11. In Autodesk Inventor, rectangles are drawn as the combination of \_\_\_\_\_ entities.

12. You can undo the last drawn spline segment when you are still inside the spline drawing option by choosing \_\_\_\_\_ from the Marking Menu displayed.
13. You can exit the **Line** tool by pressing the \_\_\_\_\_ key or by choosing \_\_\_\_\_ from the \_\_\_\_\_ menu.

## Review Questions

Answer the following questions:

1. In most of the designs, generally the first feature or the base feature is the placed feature. (T/F)
2. You can invoke the options related to sheet metal parts from the *.ipt* file. (T/F)
3. You can change the current project directory and the project files by choosing **Projects** from the **Open** dialog box. (T/F)
4. You can specify the position of entities dynamically by using the Dynamic Input. (T/F)
5. In Autodesk Inventor, you can save a file in the Sketching environment. (T/F)
6. In Autodesk Inventor, you can start a new file by using the **Open** dialog box. (T/F)
7. Which of the following tools in the **Tools** tab is used to invoke additional toolbars?
  - (a) **Application Options**
  - (b) **Customize**
  - (c) **Document Setting**
  - (d) None of these
8. Which of the following drawing display options is used to interactively zoom in and out a drawing?
  - (a) **Zoom All**
  - (b) **Pan**
  - (c) **Zoom**
  - (d) **Zoom Window**
9. Which of the following keys is used to restore the previous view?
  - (a) F5
  - (b) F6
  - (c) F7
  - (d) F4
10. Which of the following drawing display options prompts you to select an entity whose magnification has to be increased?
  - (a) **Zoom**
  - (b) **Pan**
  - (c) **Zoom Selected**
  - (d) None of these

## Exercises

### Exercise 1

Draw the basic sketch of the model shown in Figure 2-79. The sketch to be drawn is shown in Figure 2-80. Do not dimension it, as the dimensions are given only for reference.

(Expected time: 30 min)

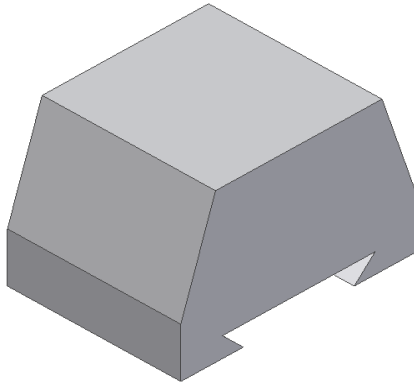


Figure 2-79 Model for Exercise 1

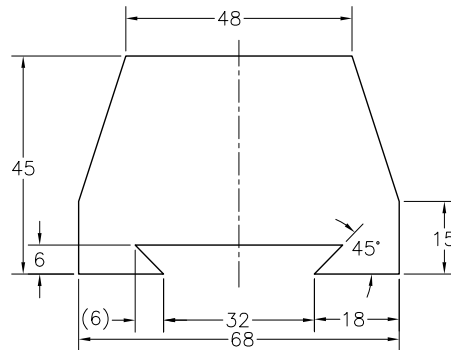


Figure 2-80 Sketch for Exercise 1

### Exercise 2

Draw the basic sketch of the model shown in Figure 2-81. The sketch to be drawn is shown in Figure 2-82. Do not dimension it, as the dimensions are given only for reference.

(Expected time: 45 min)

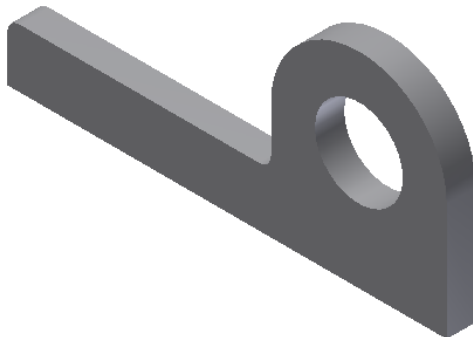


Figure 2-81 Model for Exercise 2

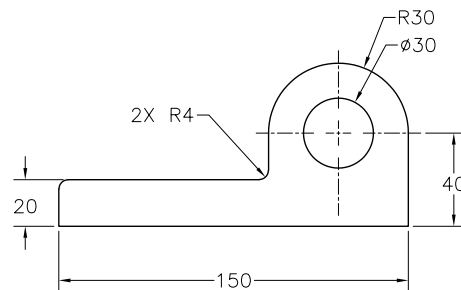


Figure 2-82 Sketch for Exercise 2

### Exercise 3

Draw the sketch of the model shown in Figure 2-83. The sketch to be drawn is shown in Figure 2-84. Do not dimension it, as the dimensions are given only for reference.

(Expected time: 45 min)

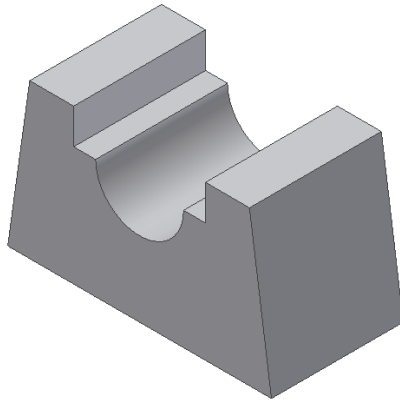


Figure 2-83 Model for Exercise 3

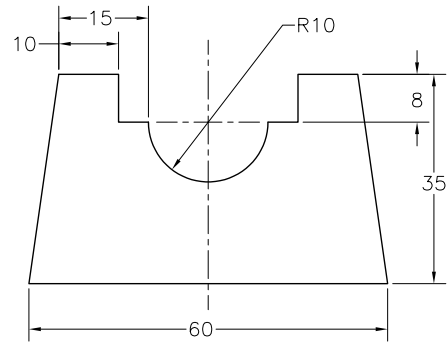


Figure 2-84 Sketch for Exercise 3

### Exercise 4

Draw the sketch of the model shown in Figure 2-85. The sketch to be drawn is shown in Figure 2-86. Do not dimension it, as the dimensions are given only for reference.

(Expected time: 45 min)

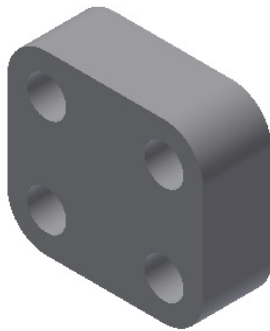


Figure 2-85 Model for Exercise 4

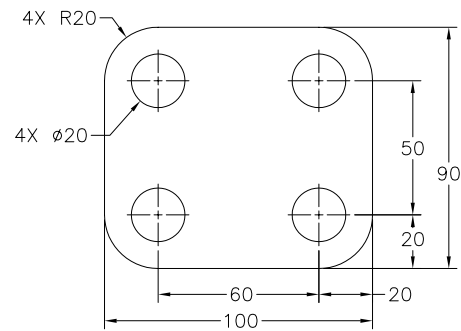


Figure 2-86 Sketch for Exercise 4

**Answers to Self-Evaluation Test**

1. T, 2. F, 3. F, 4. F, 5. normal, construction, 6. **Point**, 7. rounding, 8. TAB, 9. **Inventor Precise Input**, 10. DELETE, 11. individual, 12. **Back**, 13. ESC, **Cancel (ESC)**, Marking menu