

Student Project 1

In this project you will create the components of the Drill Press Vice assembly and assemble them together. You will also generate the drawing views of the Drill Press Vice assembly and then generate the BOM and add balloons to the drawing view. The Drill Press Vice is shown in Figure 1. The drawing views of the Drill Press Vice are shown in Figure 2. The dimensions of the components of the assembly are shown in Figures 3 through 8.

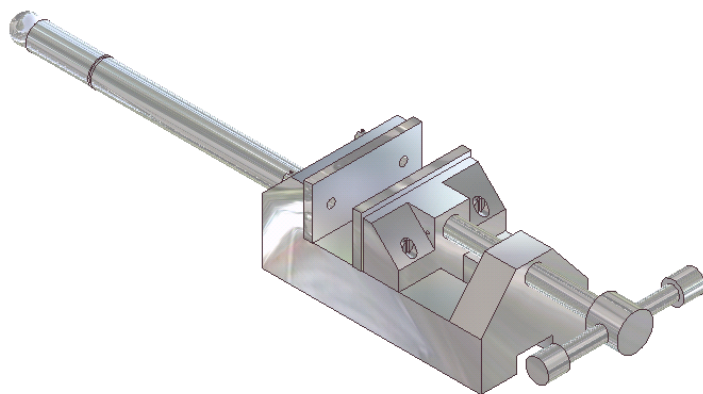


Figure 1 Drill Press Vice assembly

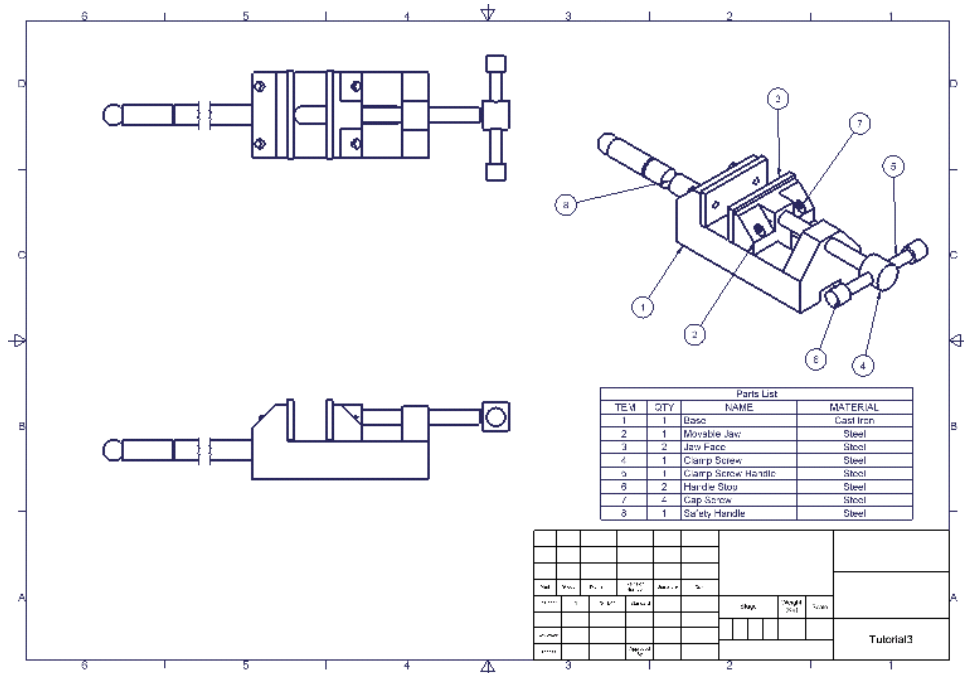


Figure 2 Drawing views of the Drill Press Vice assembly

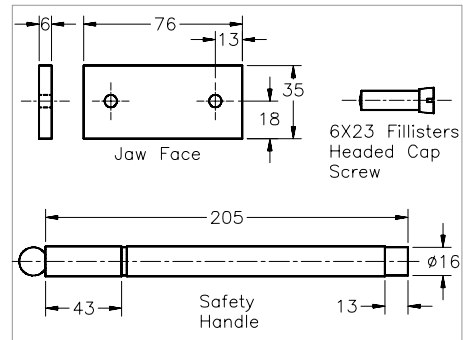


Figure 4 Dimensions of the Jaw Face, the Cap Screw, and the Safety Handle

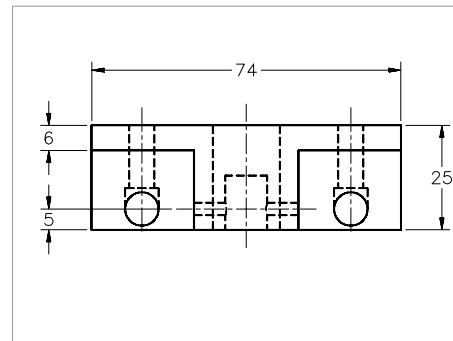


Figure 6 Top view of the Movable Jaw

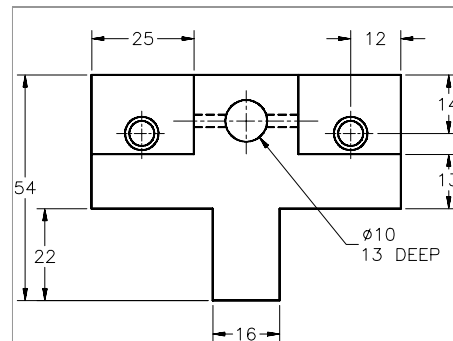


Figure 8 Front view of the Movable Jaw

Student Project 2

In this project you will create all the components of the Shock assembly and then assemble them as shown in Figure 9. Also create an exploded state of the assembly and create the explode line sketch as shown in Figure 10. The BOM is shown in Figure 11. The dimensions of the components are shown in Figures 12 through 19.

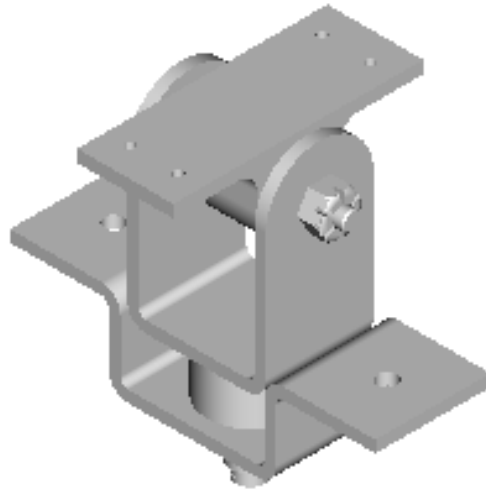


Figure 9 The Shock assembly

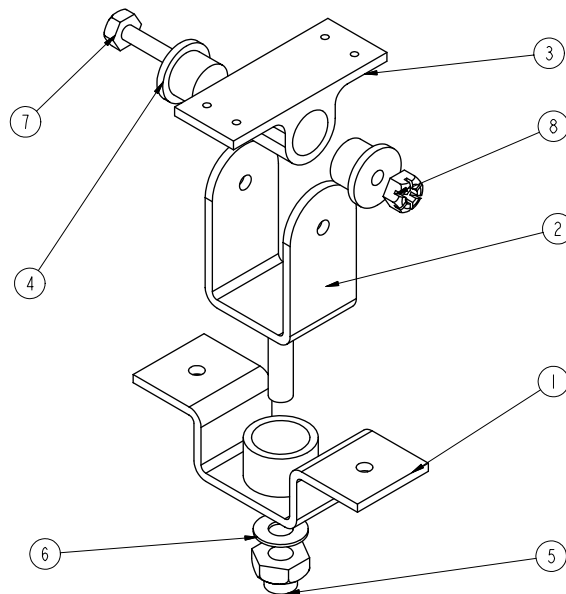


Figure 10 The exploded state of the Shock assembly

ITEM	QTY.	NAME	MATERIAL
1	1	BRACKET	STEEL
2	1	U-SUPPORT	STEEL
3	1	PIVOT	STEEL
4	2	BUSHING	BRONZE
5	1	SELF LOCKING NUT	0.625-11UNC
6	1	WASHER	USER DEFINED
7	1	HEXAGONAL BOLT	STEEL
8	1	CASTLE NUT	STEEL

Figure 11 The Bill Of Material for the Shock assembly

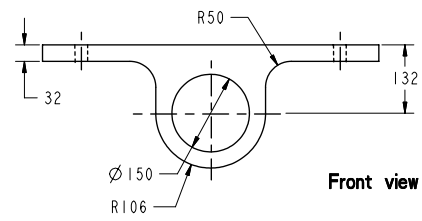
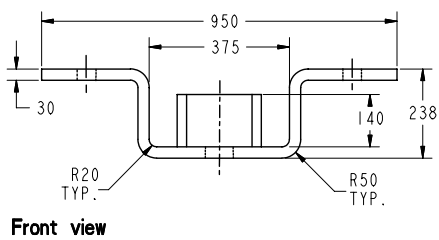
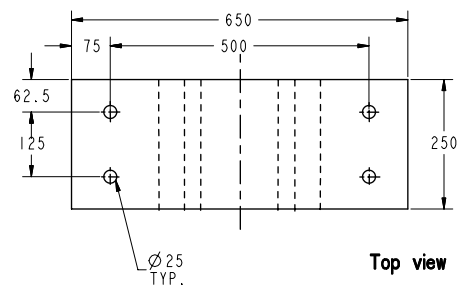
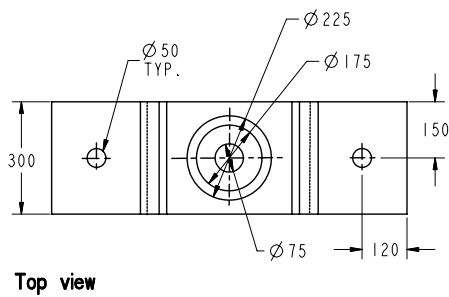


Figure 12 Dimensions for Bracket

Figure 13 Dimensions for Pivot

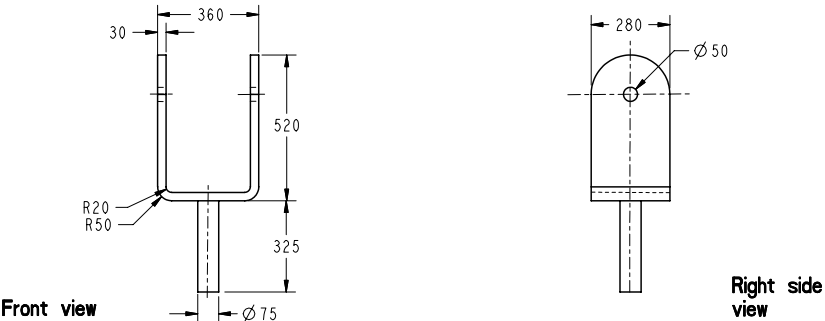


Figure 14 Dimensions for U-Support

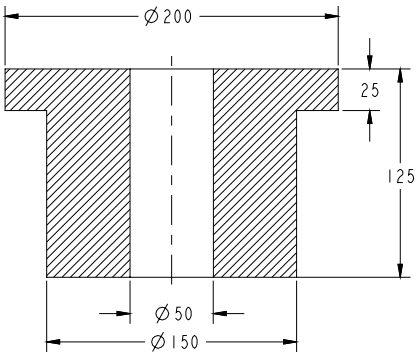


Figure 15 Dimensions for Bushing

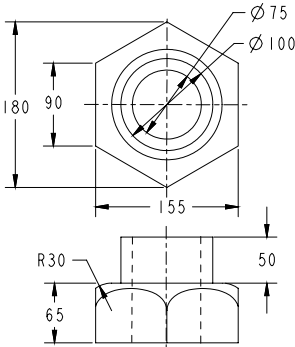


Figure 16 Dimensions for Self-locking nut

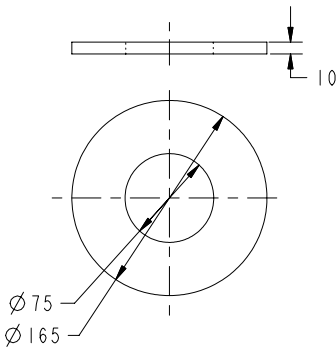


Figure 17 Dimensions for Washer

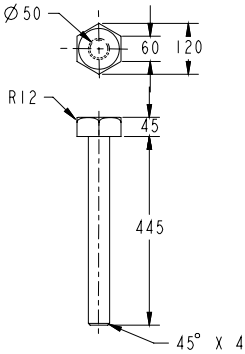


Figure 18 Dimensions for Hexagonal bolt

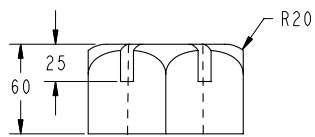
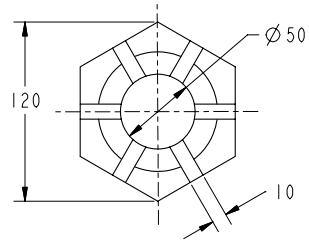


Figure 19 Dimensions for Castle nut